

Trichothecenes analysis using Luna C18(2)

Column: Luna® 5 µm C18(2) 100 Å, LC Column 150 x 3 mm, Ea

Dimensions: 150 x 3 mm ID

Order No: 00F-4252-Y0

Elution Type: Gradient

Eluent A: 20mM Ammonium Acetate, pH 4.5

Eluent B: Acetonitrile

Gradient Profile:	Step No.	Time (min)	Pct A	Pct B
	1	0.5	90	10
	2	15	20	80

Flow Rate: 0.5 mL/min

Col. Temp.: ambient

Detection: Mass Spectrometer (MS) @ amu (ambient)

Analyst Note: SecurityGuard™ Guard Cartridge System extends column lifetime.

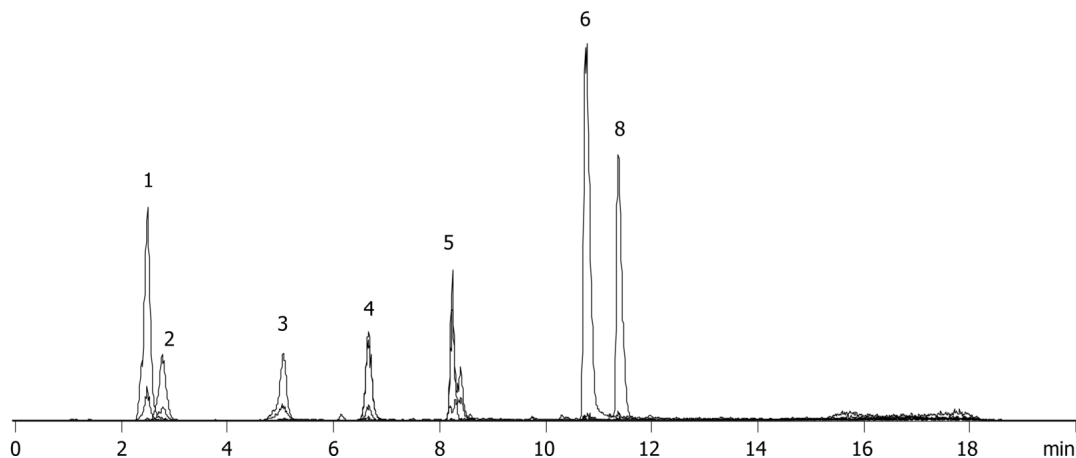
- SecurityGuard Cartridges, C18 4 x 2.0mm, 10/Pk Part No.: AJ0-4286

- Holder Part No.: KJ0-4282

15540



Products used in this application:



ANALYTES:

- 1 T-2
- 2 Nivalenol
- 3 Deoxynivalenol
- 4 Fusarenon X
- 5 15-Acetyl-Deoxynivalenol
- 6 3-Acetyl-deoxynivalenol
- 7 Diacetoxyscirpenol
- 8 HT-2

