

## Trichothecenes analysis using Gemini

**Column:** Gemini® 5 µm C18 110 Å, LC Column 150 x 3 mm, Ea

**Dimensions:** 150 x 3 mm ID

**Order No:** 00F-4435-Y0

**Elution Type:** Gradient

**Eluent A:** 20mM Ammonium Acetate, pH 4.5

**Eluent B:** ACN

Gradient Profile:	Step No.	Time (min)	Pct A	Pct B
	1	0.5	90	10
	2	15	20	80

**Flow Rate:** 0.5 mL/min

**Col. Temp.:** ambient

**Detection:** Mass Spectrometer (MS) @ amu (ambient)

**Analyst Note:** SecurityGuard™ Guard Cartridge System extends column lifetime.

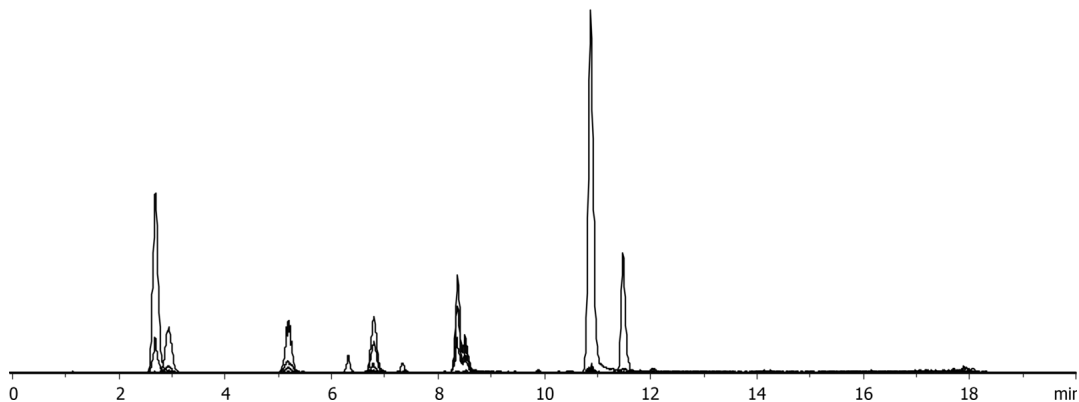
- SecurityGuard Cartridges, Gemini C18 4 x 2.0mm, 10/Pk Part No.: AJ0-7596

- Holder Part No.: KJ0-4282

15542



Products used in this application:



### ANALYTES:

- 1 T-2
- 2 Nivalenol
- 3 Deoxynivalenol
- 4 Fusarenon X
- 5 15-Acetyl-Deoxynivalenol
- 6 3-Acetyl-deoxynivalenol
- 7 Diacetoxyscirpenol
- 8 HT-2

