

GC Application

ID No.: 15581

THC on ZB1ms 12x0.20x0.33

Column: Zebtron[™] ZB-1MS, GC Cap. Column 12 m x 0.20 mm x 0.33 µm, Ea

Phase: 100% Dimethylpolysiloxane

Dimensions: 12 meters x 0.2 mm x 0.33 µm

Order No: 7DE-G011-14

Oven Profile: 200°C to 320°C at 20°C/min for 2 min

Carrier Gas: Constant Flow Helium, 0.8 mL/min

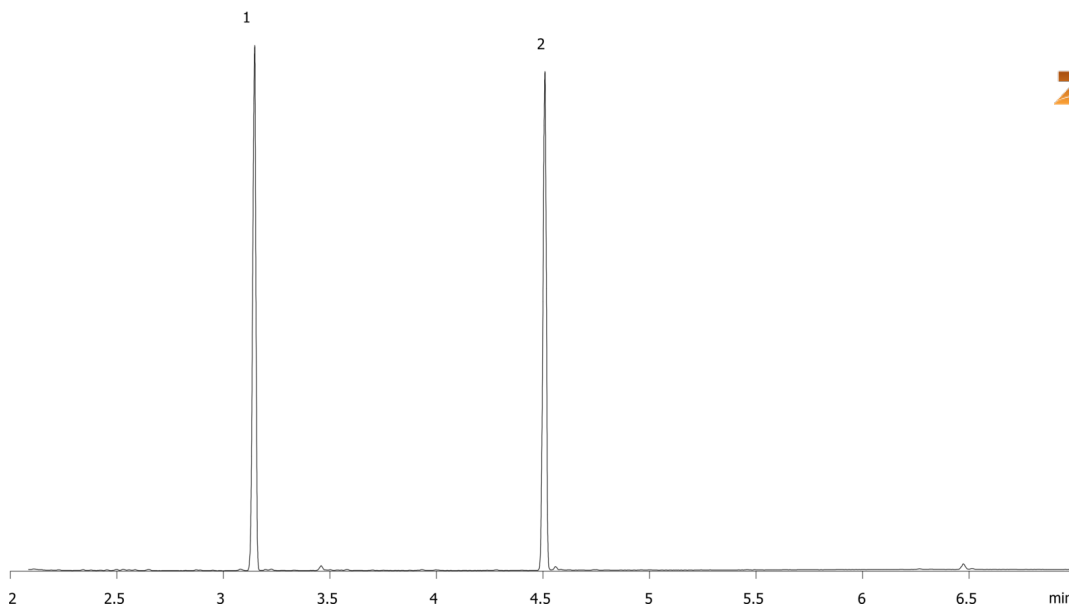
Injection: Split 10:1 1 µL @ 290°C

Detection: Mass Selective (MSD) (0°C)

15581



Products used in this application:



ANALYTES:

- 1 delta-9-THC-TMS
- 2 Carboxy-delta-9-THC-TMS

