

# HPLC Application

ID No.: 15587

## Drug mixture extracted from Plasma using PPT

**Column:** Onyx<sup>™</sup> Monolithic C18, LC Column 100 x 4.6 mm, Ea

**Dimensions:** 100 x 4.6 mm ID

**Order No:** CH0-7643

**Elution Type:** Gradient

**Eluent A:** 0.1% Formic acid in Water

**Eluent B:** 0.1% Formic acid in Acetonitrile

Gradient Profile:	Step No.	Time (min)	Pct A	Pct B
	1	0	90	10
	2	4	35	65

**Flow Rate:** 4 mL/min

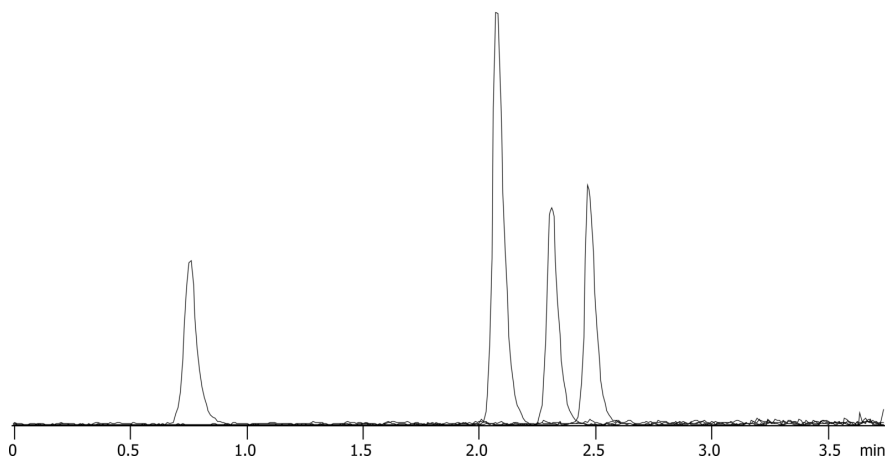
**Col. Temp.:** 30 °C

**Detection:** Mass Spectrometer (MS) @ amu (ambient)

15587



Products used in this application:



### ANALYTES:

- 1 Pseudoephedrine
- 2 Propranolol
- 3 Diltiazem
- 4 Verapamil

