

HPLC Application

ID No.: 15589

Multi-Grain Cereal Extract

Column: Onyx[™] Monolithic C18, LC Column 100 x 4.6 mm, Ea

Dimensions: 100 x 4.6 mm ID

Order No: CH0-7643

Elution Type: Gradient

Eluent A: 0.1% TFA in Water

Eluent B: 0.08% TFA in Acetonitrile

Gradient Profile:	Step No.	Time (min)	Pct A	Pct B
	1	0	95	5
	2	15	30	70

Flow Rate: 1 mL/min

Col. Temp.: 30 °C

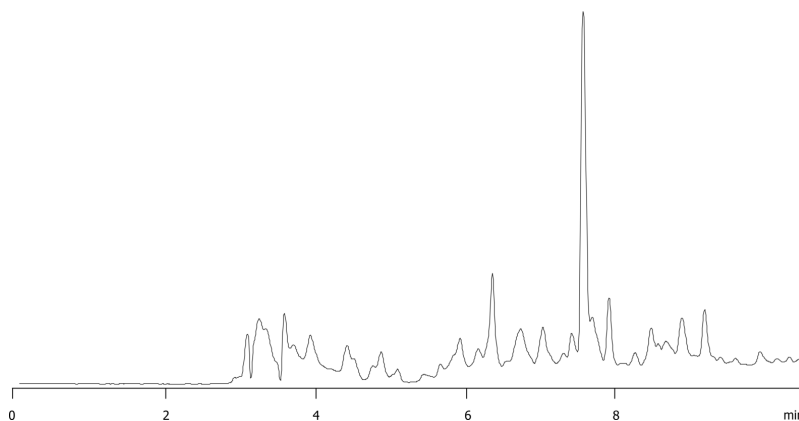
Detection: UV-Vis Abs.-Variable Wave.(UV) @ 280 nm (ambient)

Analyst Note: 2 columns coupled end to end

15589



Products used in this application:



ANALYTES:

- 1 Multi-grain cereal

