

# HPLC Application

ID No.: 15590

## Red wine analysis using Onyx C18

**Column:** Onyx<sup>™</sup> Monolithic C18, LC Column 100 x 4.6 mm, Ea

**Dimensions:** 100 x 4.6 mm ID

**Order No:** CH0-7643

**Elution Type:** Gradient

**Eluent A:** 0.1% Phosphoric acid in Water

**Eluent B:** 0.1% Phosphoric acid in Methanol

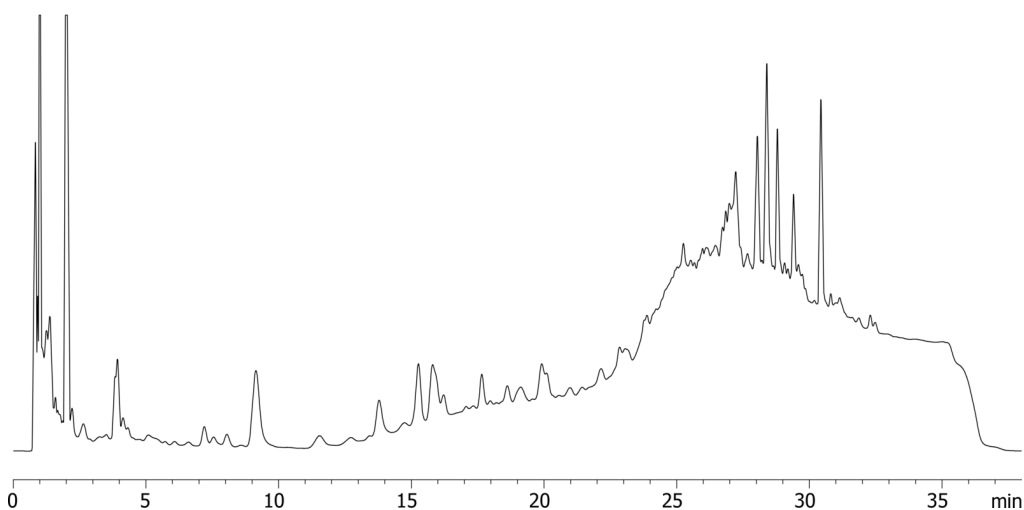
<b>Gradient Profile:</b>	<b>Step No.</b>	<b>Time (min)</b>	<b>Pct A</b>	<b>Pct B</b>
	<b>1</b>	10	97	3
	<b>2</b>	22	82	18
	<b>4</b>	30	50	50
	<b>5</b>	35	50	50

**Flow Rate:** 2 mL/min

**Col. Temp.:** 30 °C

**Detection:** UV-Vis Abs.-Variable Wave.(UV) @ 254 nm (ambient)

15590



### ANALYTES:

- 1 Red wine



Products used in this application:

