

HPLC Application

ID No.: 15597

Tricyclic Antidepressants at Neutral pH by Luna 5um C18(2)

Column: Luna® 5 µm C18(2) 100 Å, LC Column 150 x 4.6 mm, Ea

Dimensions: 150 x 4.6 mm ID

Order No: 00F-4252-E0

Elution Type: Isocratic

Eluent A: 20mM Phosphate buffer pH7.0

Eluent B: Acetonitrile

Eluent C: Methanol

Gradient Profile:	Step No.	Time (min)	Pct A	Pct B	Pct C
	1	0	30	35	35

Flow Rate: 1.5 mL/min

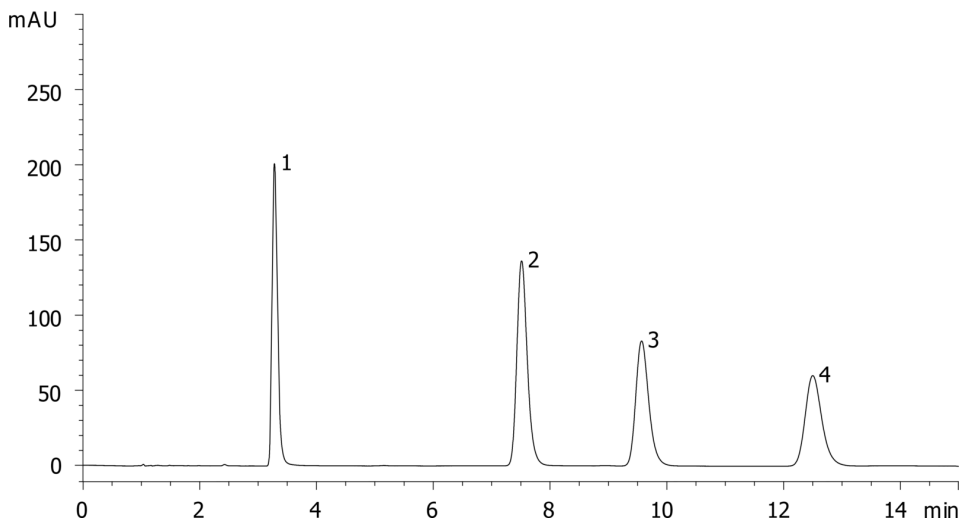
Col. Temp.: ambient

Detection: UV-Vis Abs.-Variable Wave.(UV) @ 254 nm (ambient)

Analyst Note: Peak 3 -- Amitriptyline

Efficiency = 9543 Peak Symmetry = 0.77

15597



ANALYTES:

- 1 Nortriptyline
- 2 Imipramine
- 3 Amitriptyline
- 4 Clomipramine



Products used in this application:

