

HPLC Application

ID No.: 15613

Catecholamines in 100% Aqueous by Gemini 5um C18

Column: Gemini® 5 µm C18 110 Å, LC Column 150 x 4.6 mm, Ea

Dimensions: 150 x 4.6 mm ID

Order No: 00F-4435-E0

Elution Type: Isocratic

Eluent A: 20mM Phosphate buffer pH2.5

Gradient	Step No.	Time (min)	Pct A
Profile:	1	0	100

Flow Rate: 1.5 mL/min

Col. Temp.: 30 °C

Detection: UV-Vis Abs.-Variable Wave.(UV) @ 210 nm (ambient)

Analyst Note: SecurityGuard™ Guard Cartridge System extends column lifetime.

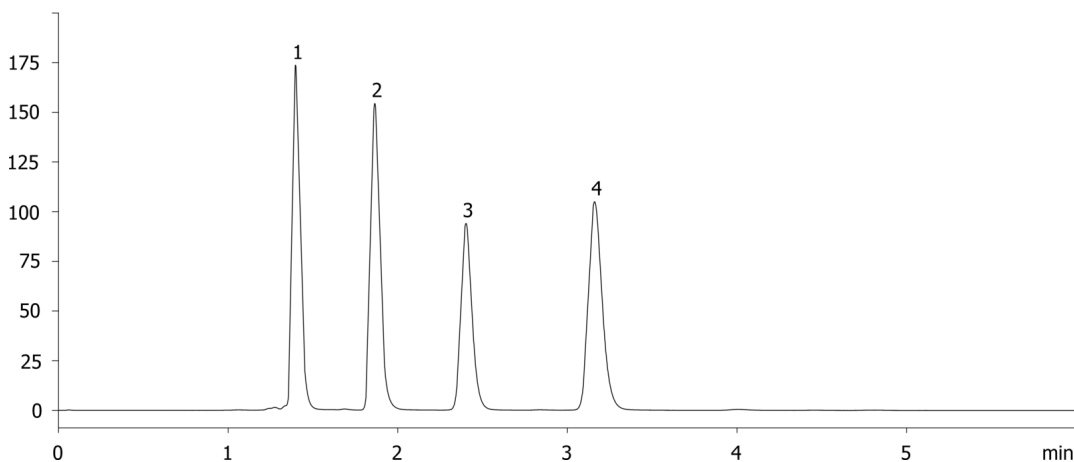
- SecurityGuard Cartridges, Gemini C18 4 x 3.0mm, 10/Pk Part No.: AJ0-7597

- Holder Part No.: KJ0-4282

15613



Products used in this application:



ANALYTES:

- 1 Norepinephrine
- 2 Epinephrine
- 3 Normetanephrine
- 4 Dopamine

