

# HPLC Application

ID No.: 15614

## Catechins by Luna 3 $\mu$ C18(2) MercuryMS Cartridge 20 x 4.0mm

**Column:** Luna® 3  $\mu$ m C18(2) 100 Å, LC Column 20 x 4 mm, Mercury, Ea

**Dimensions:** 20 x 4 mm ID

**Order No:** 00M-4251-D0-CE

**Elution Type:** Gradient

**Eluent A:** 0.1% Formic acid in Water

**Eluent B:** 0.1% Formic acid in Methanol

Gradient Profile:	Step No.	Time (min)	Pct A	Pct B
	1	0	85	15
	2	1	55	45
	3	1.01	85	15
	4	1.2	85	15

**Flow Rate:** 2.5 mL/min

**Col. Temp.:** ambient

**Detection:** UV-Vis Abs.-Variable Wave.(UV) @ 280 nm (25 °C)

**Analyst Note:** SecurityGuard™ Guard Cartridge System extends column lifetime.

- SecurityGuard Cartridges, C18 4 x 3.0mm, 10/Pk Part No.: AJ0-4287

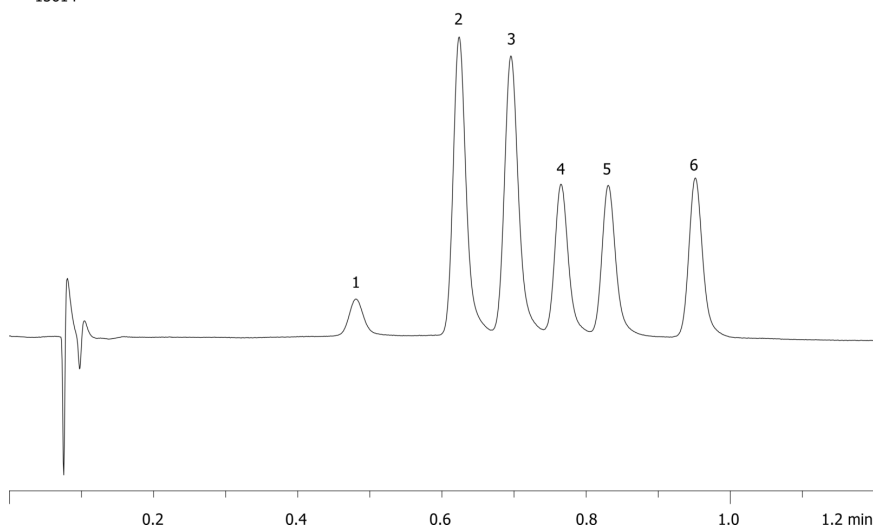
- Holder Part No.: KJ0-4282



Products used in this application:



15614



### ANALYTES:

- 1 Epigallocatechin  
Retention Time: 0.481 min
- 2 Caffeine  
Retention Time: 0.624 min
- 3 Epicatechin  
Retention Time: 0.696 min
- 4 Epigallocatechin gallate  
Retention Time: 0.765 min
- 5 Gallocatechin gallate  
Retention Time: 0.831 min
- 6 Epicatechin gallate  
Retention Time: 0.951 min

