

## Catechins by Luna 3 $\mu$ C18(2) MercuryMS cartridge 20 x 2.0mm

**Column:** Luna® 3  $\mu$ m C18(2) 100 Å, LC Column 20 x 2 mm, Mercury, Ea

**Dimensions:** 20 x 2 mm ID

**Order No:** 00M-4251-B0-CE

**Elution Type:** Gradient

**Eluent A:**

Gradient Profile:	Step No.	Time (min)	Pct A
	1	0	95
	2	0.8	80
	3	1.2	35
	4	1.21	95
	5	2	95

**Flow Rate:** 0.6 mL/min

**Col. Temp.:** ambient

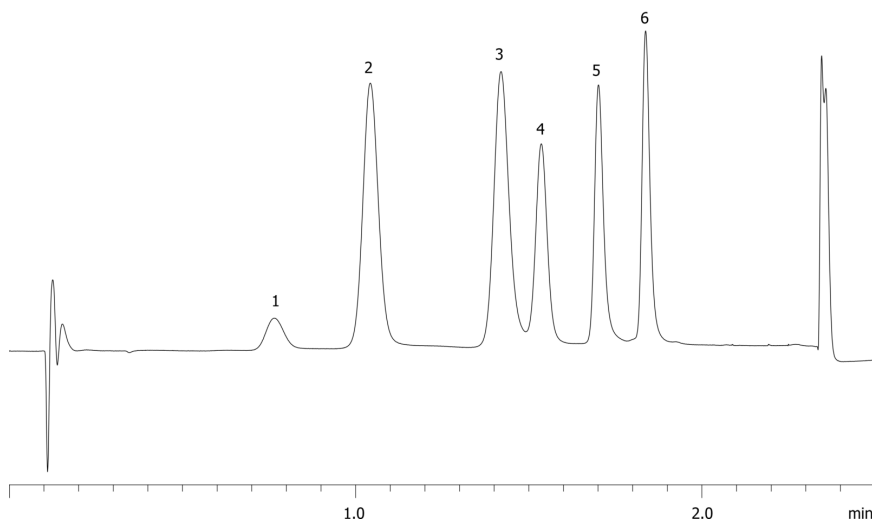
**Detection:** UV-Vis Abs.-Variable Wave.(UV) @ 280 nm (25 °C)

**Analyst Note:** SecurityGuard™ Guard Cartridge System extends column lifetime.

- SecurityGuard Cartridges, C18 4 x 2.0mm, 10/Pk Part No.: AJ0-4286

- Holder Part No.: KJ0-4282

15616



### ANALYTES:

- 1** Epigallocatechin  
Retention Time: 0.765 min
- 2** Caffeine  
Retention Time: 0.624 min
- 3** Epicatechin  
Retention Time: 0.696 min
- 4** Epigallocatechin gallate  
Retention Time: 0.765 min
- 5** Galocatechin gallate  
Retention Time: 0.831 min
- 6** Epicatechin gallate  
Retention Time: 0.951 min



Products used in this application:

