

## Catechins by Luna 3µ Phenyl-Hexyl MercuryMS Cartridge 20 x 2.0mm

**Column:** Luna® 3 µm Phenyl-Hexyl 100 Å, LC Column 20 x 2 mm, Mercury, Ea

**Dimensions:** 20 x 2 mm ID

**Order No:** 00M-4256-B0-CE

**Elution Type:** Gradient

**Eluent A:** 0.1% Formic acid in Water

**Eluent B:** 0.1% Formic acid in Acetonitrile

Gradient Profile:	Step No.	Time (min)	Pct A	Pct B
	1	0	90	10
	2	0.8	85	15
	3	1.2	40	60
	4	1.21	90	10
	5	2	90	10

**Flow Rate:** 0.6 mL/min

**Col. Temp.:** ambient

**Detection:** UV-Vis Abs.-Variable Wave.(UV) @ 280 nm (25 °C)

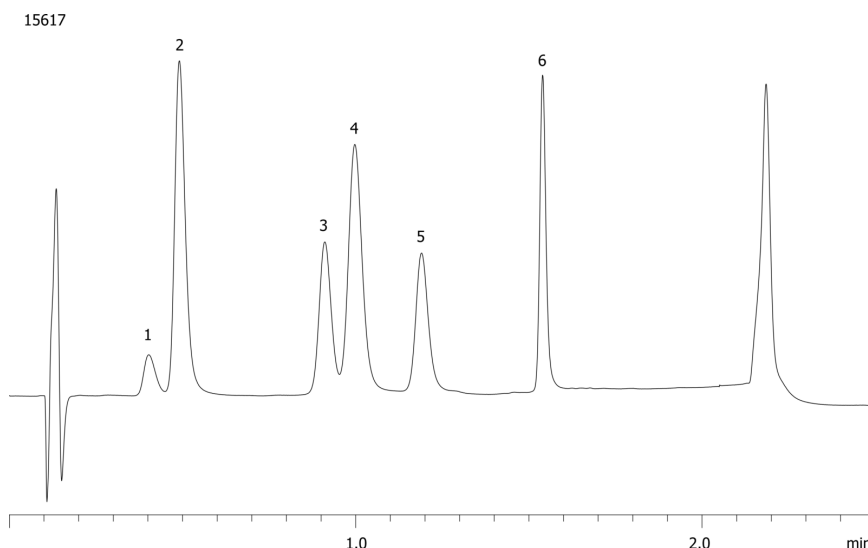
**Analyst Note:** SecurityGuard™ Guard Cartridge System extends column lifetime.

- SecurityGuard Cartridges, Phenyl 4 x 2.0mm, 10/Pk Part No.: AJ0-4350

- Holder Part No.: KJ0-4282



Products used in this application:



### ANALYTES:

- 1** Epigallocatechin  
Retention Time: 0.402 min
- 2** Caffeine  
Retention Time: 0.558 min
- 3** Epicatechin  
Retention Time: 0.848 min
- 4** Epigallocatechin gallate  
Retention Time: 1.077 min
- 5** Galocatechin gallate  
Retention Time: 1.194 min
- 6** Epicatechin gallate  
Retention Time: 1.564 min

