

HPLC Application

ID No.: 15626

Pharmaceutical Compounds by Luna 3 μ C18(2) MercuryMS Cartridge 20 x 4.0mm

Column: Luna[®] 3 μ m C18(2) 100 Å , LC Column 20 x 4 mm, Mercury, Ea

Dimensions: 20 x 4 mm ID

Order No: 00M-4251-D0-CE

Elution Type: Gradient

Eluent A:

Gradient Profile:	Step No.	Time (min)	Pct A
	1	0	95
	2	1	10
	3	1.01	95
	4	1.2	95

Flow Rate: 2.5 mL/min

Col. Temp.: ambient

Detection: UV-Vis Abs.-Variable Wave.(UV) @ 254 nm (25 °C)

Analyst Note: SecurityGuard[™] Guard Cartridge System extends column lifetime.

- SecurityGuard Cartridges, C18 4 x 3.0mm, 10/Pk Part No.: AJ0-4287

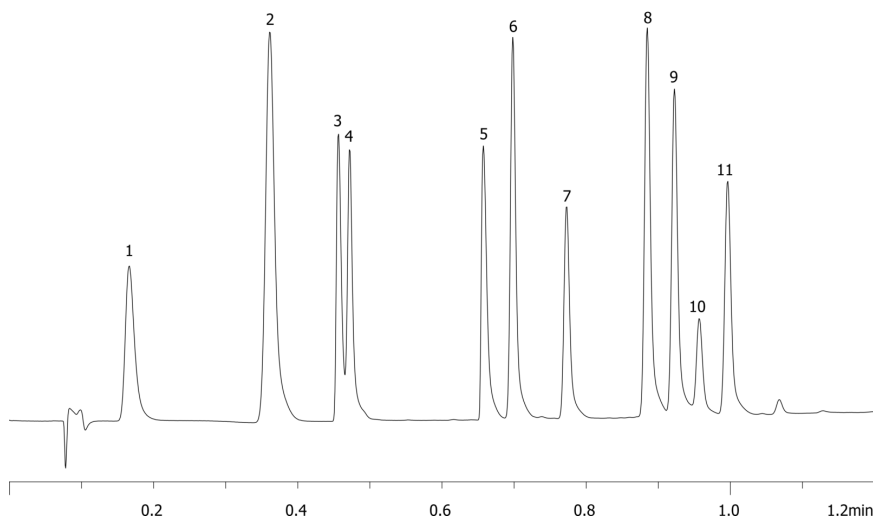
- Holder Part No.: KJ0-4282



Products used in this application:



15626



Pharmaceutical Compounds by Luna 3 μ C18(2) MercuryMS Cartridge 20 x 4.0mm

ANALYTES:

- 1 Sulfanilamide
- 2 Acetaminophen
- 3 Triamterene
- 4 Caffeine
- 5 Imipramine
- 6 Prednisolone
- 7 Furosemide
- 8 Naproxen
- 9 Probenecid
- 10 Ethacrynic acid
- 11 Indomethacin

