

HPLC Application

ID No.: 15640

Onyx RP (C18) Test Chromatogram (AL0-7836)

Column: Onyx[™] Monolithic C18, LC Column 50 x 4.6 mm, Ea

Dimensions: 50 x 4.6 mm ID

Order No: CH0-7644

Elution Type: Isocratic

Eluent A: Acetonitrile

Eluent B: Water

Gradient Profile:	Step No.	Time (min)	Pct A	Pct B
	1	0	60	40

Flow Rate: 2 mL/min

Col. Temp.: ambient

Detection: UV-Vis Abs.-Variable Wave.(UV) @ 254 nm (ambient)

Analyst Note: This standard is used to test the following Phenomenex Onyx[™] Monolithic Reversed Phase Columns: Onyx C8 and C18.

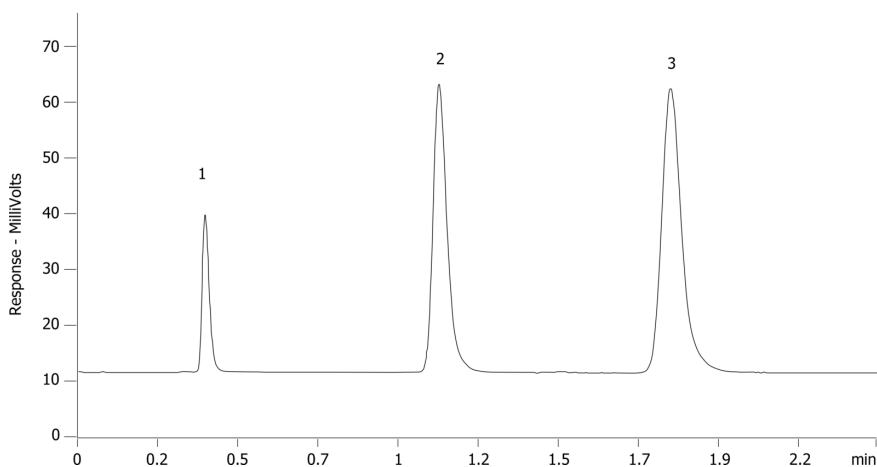
NOTE: Separation conditions and results may vary for your column. Contact your Technical Representative.

Efficiency (based on Anthracene) = 92136 p/m (Test Mix Order No.: 7836)

15640



Products used in this application:



ANALYTES:

1 Thiourea

Retention Time: 0.38 min

2 Progesterone

Retention Time: 1.1 min

3 Anthracene

Retention Time: 1.8 min

