

HPLC Application

ID No.: 15641

Performance test on Onyx C8

Column: Onyx™ Monolithic C8, LC Column 100 x 4.6 mm, Ea

Dimensions: 100 x 4.6 mm ID

Order No: CH0-7647

Elution Type: Isocratic

Eluent A: Water

Eluent B: Acetonitrile

Gradient Profile:	Step No.	Time (min)	Pct A	Pct B
	1	0	40	60

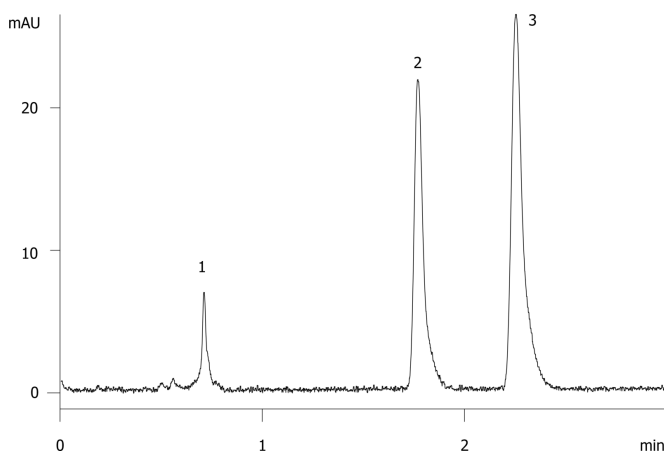
Flow Rate: 2 mL/min

Col. Temp.: ambient

Detection: UV-Vis Abs.-Variable Wave.(UV) @ 254 nm (ambient)
15641



Products used in this application:



ANALYTES:

- 1** Thiourea
Retention Time: 0.706 min
- 2** Progesterone
Retention Time: 1.764 min
- 3** Anthracene
Retention Time: 2.248 min

