

# HPLC Application

ID No.: 15647

## Phenols on Onyx C8 (Luna Comparison)

**Column:** Onyx™ Monolithic C8, LC Column 100 x 4.6 mm, Ea

**Dimensions:** 100 x 4.6 mm ID

**Order No:** CH0-7647

**Elution Type:** Gradient

**Eluent A:** 0.1% Phosphoric acid

**Eluent B:** Acetonitrile

Gradient Profile:	Step No.	Time (min)	Pct A	Pct B
	1	0	70	30
	2	4	20	80

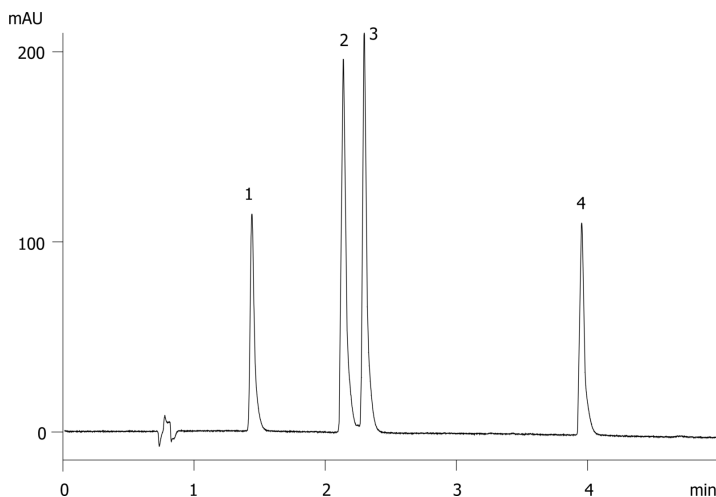
**Flow Rate:** 2 mL/min

**Col. Temp.:** ambient

**Detection:** UV-Vis Abs.-Variable Wave.(UV) @ 254 nm (ambient)  
15647



Products used in this application:



### ANALYTES:

- 1** Phenol  
Retention Time: 1.441 min
- 2** 2,4-Dinitrophenol  
Retention Time: 2.139 min
- 3** 3,4-Dinitrophenol  
Retention Time: 2.298 min
- 4** Pentachlorophenol  
Retention Time: 3.957 min

