

HPLC Application

ID No.: 15662

Caffeine & Metabolites, pH 7.5 - Luna 5 μ m C18(2)

Column: Luna[®] 5 μ m C18(2) 100 Å, LC Column 150 x 4.6 mm, Ea

Dimensions: 150 x 4.6 mm ID

Order No: 00F-4252-E0

Elution Type: Gradient

Eluent A: 20mM Ammonium acetate, pH 7.5

Eluent B: Acetonitrile

Gradient Profile:	Step No.	Time (min)	Pct A	Pct B
	1	0	98	2
	2	15	80	20

Flow Rate: 1 mL/min

Col. Temp.: 25 °C

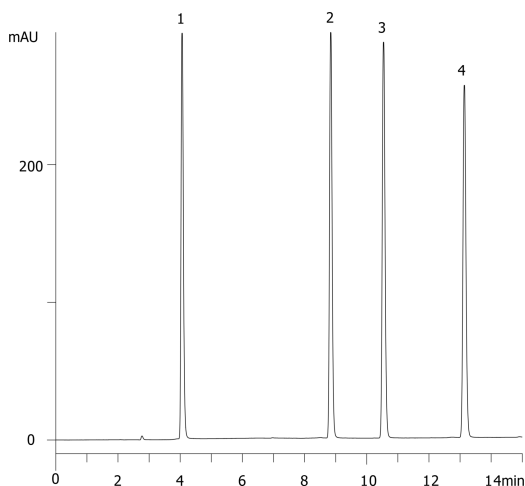
Detection: UV-Vis Abs.-Variable Wave.(UV) @ 273 nm (25 °C)

Analyst Note: SecurityGuard[™] Guard Cartridge System extends column lifetime.

- SecurityGuard Cartridges, C18 4 x 3.0mm, 10/Pk Part No.: AJ0-4287

- Holder Part No.: KJ0-4282

15662



ANALYTES:

- 1** Xanthine
Retention Time: 4.059 min
- 2** Theobromine
Retention Time: 8.84 min
- 3** Theophylline
Retention Time: 10.54 min
- 4** Caffeine
Retention Time: 13.14 min



Products used in this application:

