

GC Application

ID No.: 15697

EPA Method 8260B: Volatile Organic Analysis on ZB-624

Column: Zebron[™] ZB-624, GC Cap. Column 20 m x 0.18 mm x 1.00 μ m, Ea

Phase: 6% Cyanopropylphenyl 94% Dimethylpolysiloxane

Dimensions: 20 meters x 0.18 mm x 1 μ m

Order No: 7FD-G005-22

Oven Profile: 35°C for 4 min to 200°C at 15°C/min for 0.1 min

Carrier Gas: Constant Flow Helium, 0.7 mL/min

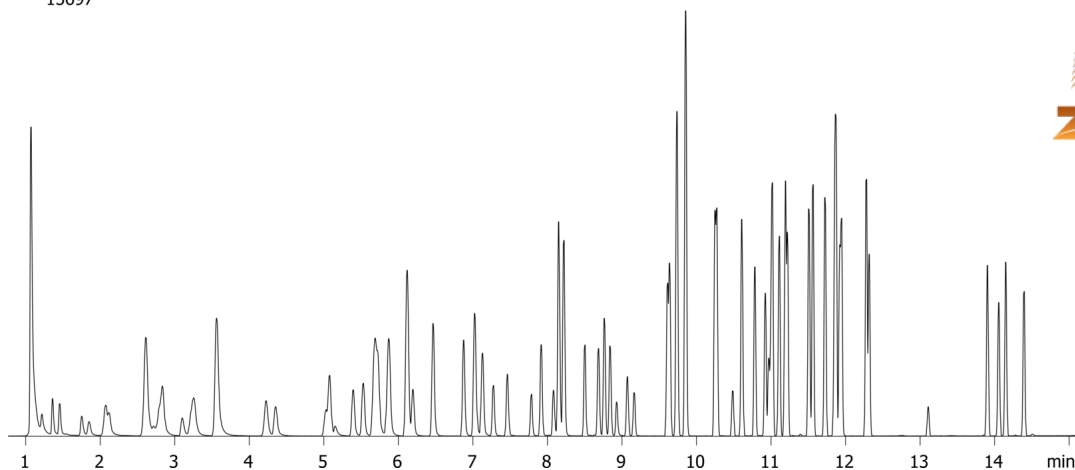
Injection: Purge and Trap 55:1 1 μ L @ 250°C

Detection: Mass Selective (MSD) (0°C)

15697



Products used in this application:



EPA Method 8260B: Volatile Organic Analysis on ZB-624

ANALYTES:

1	Dichlorodifluoromethane	41	Toluene
2	Chloromethane	42	trans-1,3-Dichloropropene
3	Vinyl chloride	43	1,1,2-Trichloroethane
4	Bromomethane	44	Tetrachloroethene
5	Chloroethane	45	1,3-Dichloropropane
6	Trichlorofluoromethane	46	2-Hexanone
7	1,1-Dichloroethene	47	Dibromochloromethane
8	1,1,2-Trichloro-1,2,2-trifluoroethane	48	1,2-Dibromoethane
9	Acetone	49	Chlorobenzene-d5
10	Iodomethane	50	Chlorobenzene
11	Carbon disulfide	51	1,1,1,2-Tetrachloroethane
12	Methyl acetate	52	Ethylbenzene
13	Methylene chloride	53	m/p-Xylene
14	Methyl tert-butyl ether	54	o-Xylene
15	trans-1,2-Dichloroethene	55	Styrene
16	1,1-Dichloroethane	56	Bromoform
17	Vinyl acetate	57	Isopropylbenzene
18	2,2-Dichloropropane	58	4-Bromofluorobenzene
19	cis-1,2-Dichloroethene	59	Bromobenzene
20	2-Butanone	60	1,1,2,2-Tetrachloroethane
21	Bromochloromethane	61	1,2,3-Trichloropropane
22	Chloroform	62	n-Propylbenzene
23	1,1,1-Trichloroethane	63	2-Chlorotoluene
24	Cyclohexane	64	1,3,5-Trimethylbenzene
25	Dibromofluoromethane	65	4-Chlorotoluene
26	Carbon tetrachloride	66	tert-Butylbenzene
27	1,1-Dichloropropene	67	1,2,4-Trimethylbenzene
28	1,2-Dichloroethane-d4	68	sec-Butylbenzene
29	Benzene	69	1,3-Dichlorobenzene
30	1,2-Dichloroethane	70	4-Isopropyltoluene
31	Fluorobenzene	71	1,4-Dichlorobenzene-d4
32	Trichloroethene	72	1,4-Dichlorobenzene
33	Methylcyclohexane	73	n-Butylbenzene
34	1,2-Dichloropropane	74	1,2-Dichlorobenzene
35	Dibromomethane	75	1,2-Dibromo-3-chloropropane
36	Bromodichloromethane	76	1,2,4-Trichlorobenzene
37	2-Chloroethyl vinyl ether	77	Hexachlorobutadiene
38	cis-1,3-Dichloropropene	78	Naphthalene
39	4-Methyl-2-pentanone	79	1,2,3-Trichlorobenzene
40	Toluene-d8		

