

# HPLC Application

ID No.: 15721

## Organics on Luna 3u C18(2) Capillary LC

**Column:** Luna® 3 µm C18(2) 100 Å, LC Column 50 x 0.3 mm, Capillary, Ea

**Dimensions:** 50 x 0.3 mm ID

**Order No:** 00B-4251-AC

**Elution Type:** Gradient

**Eluent A:** 10mM Ammonium Acetate

**Eluent B:** Acetonitrile

Gradient Profile:	Step No.	Time (min)	Pct A	Pct B
	1	0	98	2
	2	45	2	98

**Flow Rate:** 14 µL/min

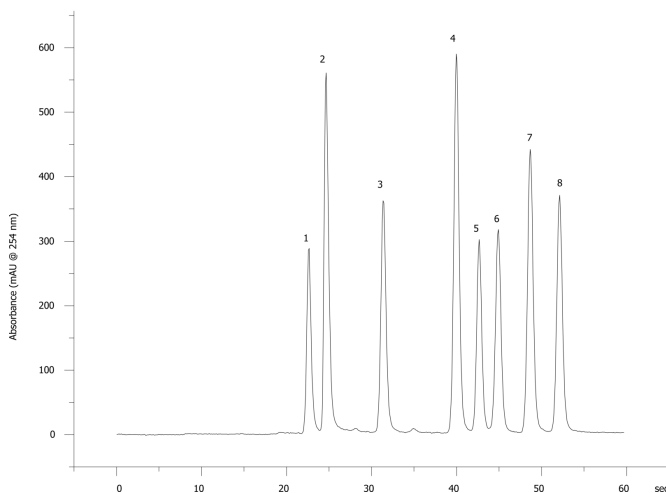
**Col. Temp.:** ambient

**Detection:** UV-Vis Abs.-Variable Wave.(UV) @ 254 nm (ambient)

15721



Products used in this application:



### ANALYTES:

- 1 Theophylline
- 2 5-Phenyl-1H-Tetrazole
- 3 Colchicine
- 4 Acetophenone
- 5 Indole
- 6 Propiophenone
- 7 Butyrophenone
- 8 Valerophenone

