

HPLC Application

ID No.: 15733

Phospholipids in HILIC mode using Luna NH2

Column: Luna® 5 µm NH2 100 Å, LC Column 150 x 4.6 mm, Ea

Dimensions: 150 x 4.6 mm ID

Order No: 00F-4378-E0

Elution Type: Gradient

Eluent A: Water

Eluent B: Acetonitrile

Gradient Profile:	Step No.	Time (min)	Pct A	Pct B
	1	0	5	95
	2	15	50	50

Flow Rate: 1 mL/min

Col. Temp.: 30 °C

Detection: ELSD @ (ambient)

Analyst Note: SecurityGuard™ Guard Cartridge System extends column lifetime.

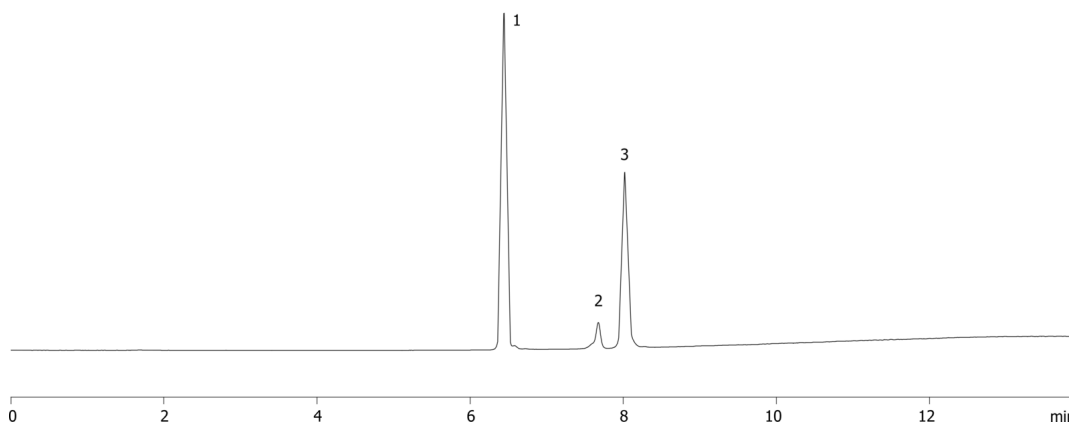
- SecurityGuard Cartridges, NH2 4 x 3.0mm, 10/Pk Part No.: AJ0-4302

- Holder Part No.: KJ0-4282

15733



Products used in this application:



ANALYTES:

- 1 L-a-Phosphatidylcholine
- 2 L-a-Phosphatidylethanolamine
- 3 L-a-Phosphatidylinositol

