

Ginkgo Terpene Lactones and Flavone Glycosides Using Synergi Fusion-RP

Column: Synergi™ 4 µm Fusion-RP 80 Å, LC Column 150 x 4.6 mm, Ea

Dimensions: 150 x 4.6 mm ID

Order No: 00F-4424-E0

Elution Type: Gradient



Gradient	Step No.	Time (min)	Pct A
----------	----------	------------	-------

Profile:

Col. Temp.: ambient

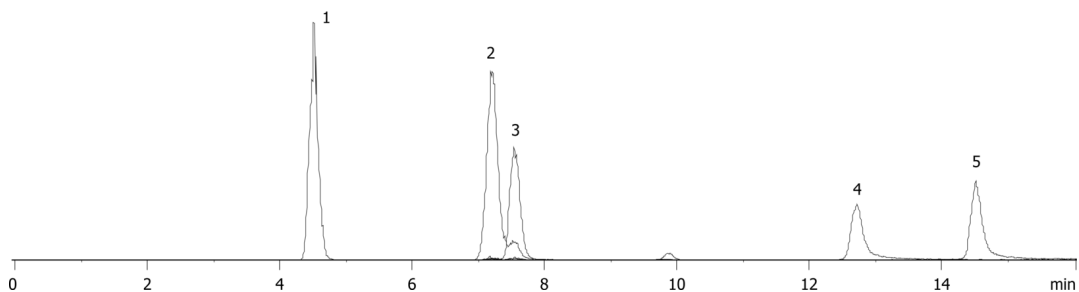
Detection: Mass Spectrometer (MS) @ amu (ambient)

Detector Info: SecurityGuard™ Guard Cartridge System extends column lifetime.

Analyst Note: - SecurityGuard Cartridges, Fusion-RP 4 x 3.0mm, 10/Pk Part No.: AJ0-7557

- Holder Part No.: KJ0-4282

15737



ANALYTES:

- 1 Bilobalide
- 2 Ginkgolide A
- 3 Ginkgolide B
- 4 Quercetin
- 5 Kaempferol

