

Catecholamines using Synergi Fusion-RP

Column: Synergi™ 4 µm Fusion-RP 80 Å, LC Column 150 x 4.6 mm, Ea

Dimensions: 150 x 4.6 mm ID

Order No: 00F-4424-E0

Elution Type: Gradient

Eluent A: 20mM Ammonium formate, pH 3.5

Eluent B: Methanol

Gradient Profile:	Step No.	Time (min)	Pct A	Pct B
	1	0	97	3
	2	10	65	35

Flow Rate: 1 mL/min

Col. Temp.: ambient

Detection: UV-Vis Abs.-Variable Wave.(UV) @ 260 nm (ambient)

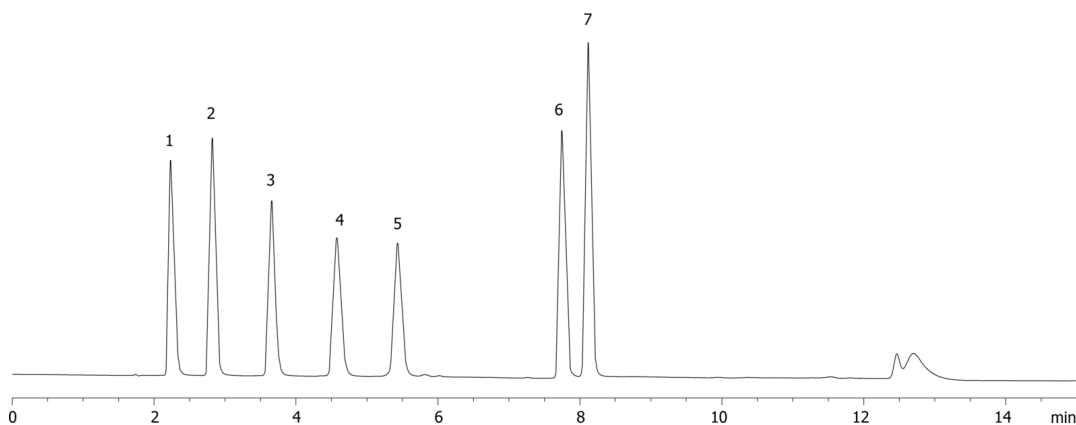
Analyst Note: SecurityGuard™ Guard Cartridge System extends column lifetime.

- SecurityGuard Cartridges, Fusion-RP 4 x 3.0mm, 10/Pk Part No.: AJ0-7557

- Holder Part No.: KJ0-4282



15738



ANALYTES:

- 1 Norepinephrine
- 2 Epinephrine
- 3 Normetanephrine
- 4 Dopamine
- 5 Deoxyepinephrine
- 6 3-Methoxytyramine
- 7 Serotonin

