

Massachusetts EPH - Aromatic Fraction on ZB-5MS

Column: Zebron[™] ZB-5MS, GC Cap. Column 30 m x 0.32 mm x 0.25 μm, Ea

Phase: 5% Phenyl-Arylene 95% Dimethylpolysiloxane

Dimensions: 30 meters x 0.32 mm x 0.25 μm

Order No: 7HM-G010-11

Oven Profile: 60°C for 1 min to 290°C at 8°C/min for 6.75 min

Carrier Gas: Constant Flow Helium, 3 mL/min

Injection: Splitless :1 2 μL @ 285°C

Detection: Flame Ionization (FID) (315°C)

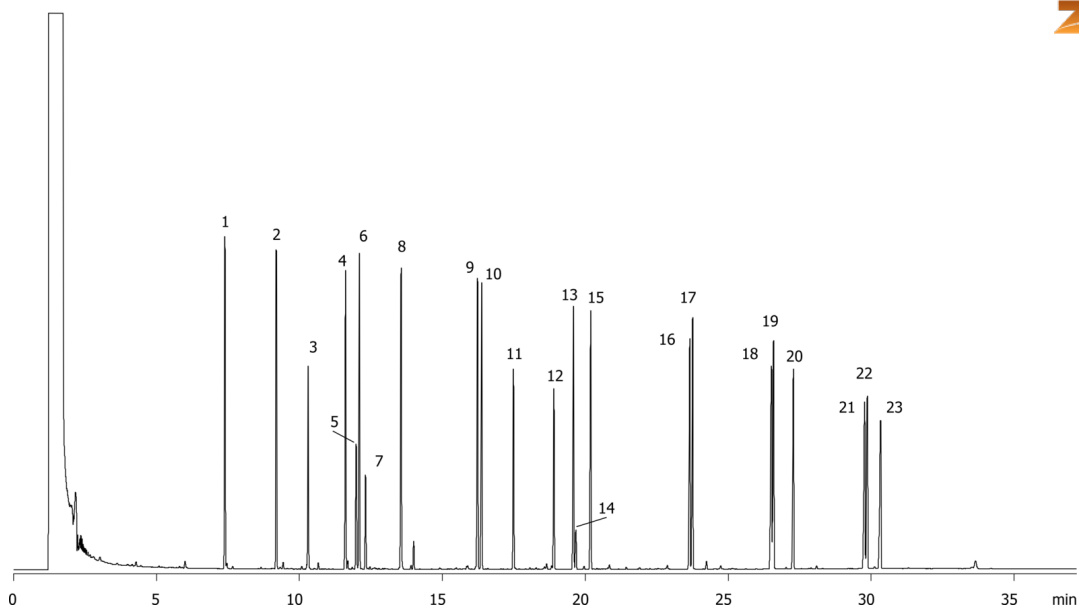
Analyst Note: Analytes are 50ppm and IS and Surrogates are 40ppm for fractionation.



Products used in this application:



15788



Massachusetts EPH - Aromatic Fraction on ZB-5MS

ANALYTES:

- 1 Naphthalene
- 2 2-Methylnaphthalene
- 3 2-Fluorobiphenyl
- 4 Acenaphthalene
- 5 2-Bromonaphthalene
- 6 Acenaphthene
- 7 phthalate
- 8 Fluorene
- 9 Phenanthrene
- 10 Anthracene
- 11 o-Terphenyl
- 12 5-alpha-Androstane
- 13 Fluoranthene
- 14 1-Chloro-octadecane
- 15 Pyrene
- 16 Benz[a]anthracene
- 17 Chrysene
- 18 Benzo[b]fluoranthene
- 19 Benzo[k]fluoranthene
- 20 Benzo[a]pyrene
- 21 Indeno[1,2,3-cd]pyrene
- 22 Dibenz[a,h]anthracene
- 23 Benzo[g,h,i]perylene

