

## EPA Method 515.2: Chlorinated Acids on ZB-1701

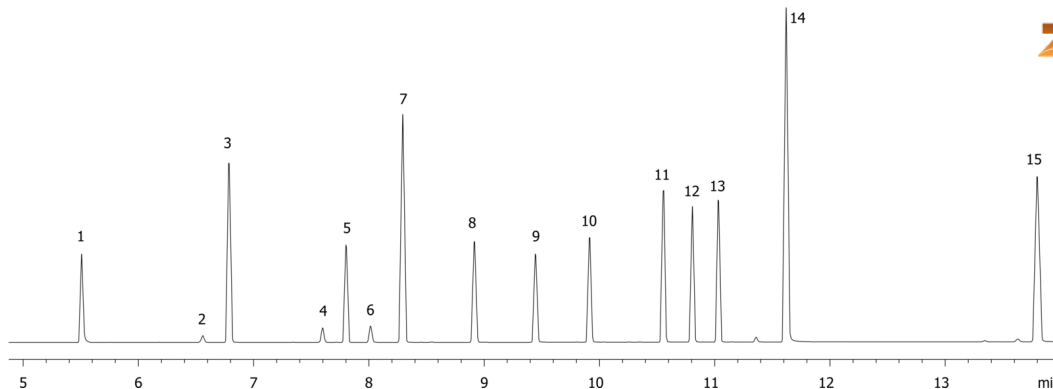
**Column:** Zebron<sup>™</sup> ZB-1701, GC Cap. Column 30 m x 0.25 mm x 0.25  $\mu$ m, Ea  
**Phase:** 14% Cyanopropylphenyl 86% Dimethylpolysiloxane  
**Dimensions:** 30 meters x 0.25 mm x 0.25  $\mu$ m  
**Order No:** 7HG-G006-11  
**Oven Profile:** 80°C to 180°C at 25°C/min to 220°C at 8°C/min to 260°C at 20°C/min for 3 min  
**Carrier Gas:** Constant Flow Helium, 1.2 mL/min  
**Injection:** Splitless :1 2  $\mu$ L @ 200°C  
**Detection:** Electron Capture (ECD) (280°C)  
**Analyst Note:** Analytes were methylated



Products used in this application:



15791



## EPA Method 515.2: Chlorinated Acids on ZB-1701

### ANALYTES:

- 1 3,5-Dichlorobenzoic acid
- 2 2,4-Dichlorophenylacetic acid
- 3 Dicamba
- 4 Dichloroprop
- 5 4,4'-Dibromooctafluorobiphenyl
- 6 2,4-D
- 7 Pentachlorophenol
- 8 Silvex
- 9 2,4,5-T
- 10 2,4-DB
- 11 Dinoseb
- 12 Bentazon
- 13 Dacthal
- 14 Picloram
- 15 Acifluorfen

