

# HPLC Application

ID No.: 15797

## Loading of Basic Compounds (Nadolol, Metoprolol, Propranolol) on Onyx C18

**Column:** Onyx™ Monolithic Semi-PREP C18, LC Column 100 x 10 mm, Ea

**Dimensions:** 100 x 10 mm ID

**Order No:** CH0-7878

**Elution Type:** Gradient

**Eluent A:** 0.1% TFA in Water

**Eluent B:** 0.1% TFA in Acetonitrile

Gradient Profile:	Step No.	Time (min)	Pct A	Pct B
	1	0	95	5
	2	7	5	95
	3	7.01	95	5
	4	10	95	5

**Flow Rate:** 5 mL/min

**Col. Temp.:** ambient

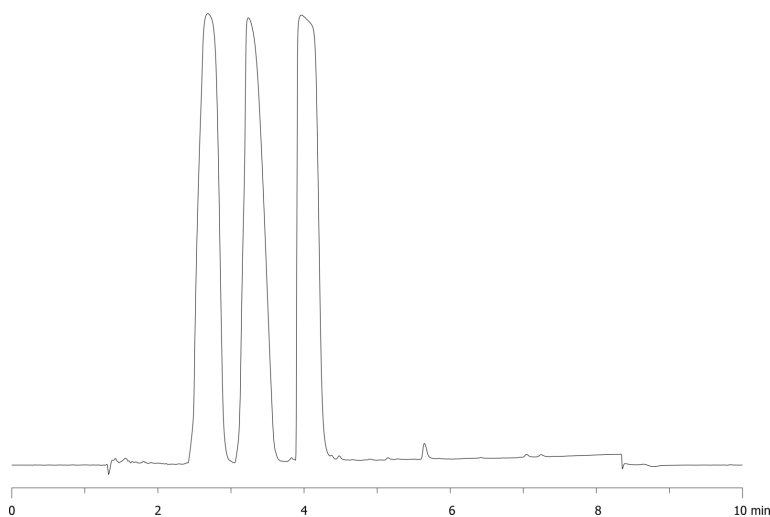
**Detection:** UV-Vis Abs.-Variable Wave.(UV) @ 254 nm (ambient)

**Analyst Note:** Load amount (total) was 25mg

15797



Products used in this application:



### ANALYTES:

- 1 Nadolol
- 2 Metoprolol
- 3 Propranolol

