

HPLC Application

ID No.: 15821

Gemini 5520-22 Basic Drugs

Column: Gemini[®] 5 µm C18 110 Å, LC Column 150 x 4.6 mm, Ea

Dimensions: 150 x 4.6 mm ID

Order No: 00F-4435-E0

Elution Type: Isocratic

Eluent A: 10mM NH₄HCO₃ pH 10.5

Eluent B: ACN

Gradient Profile:	Step No.	Time (min)	Pct A	Pct B
	1	0	50	50

Flow Rate: 1 mL/min

Col. Temp.: ambient

Detection: UV-Vis Abs.-Variable Wave.(UV) @ 230 nm (25 °C)

Analyst Note: SecurityGuard[™] Guard Cartridge System extends column lifetime.

- SecurityGuard Cartridges, Gemini C18 4 x 3.0mm, 10/Pk Part No.: AJ0-7597

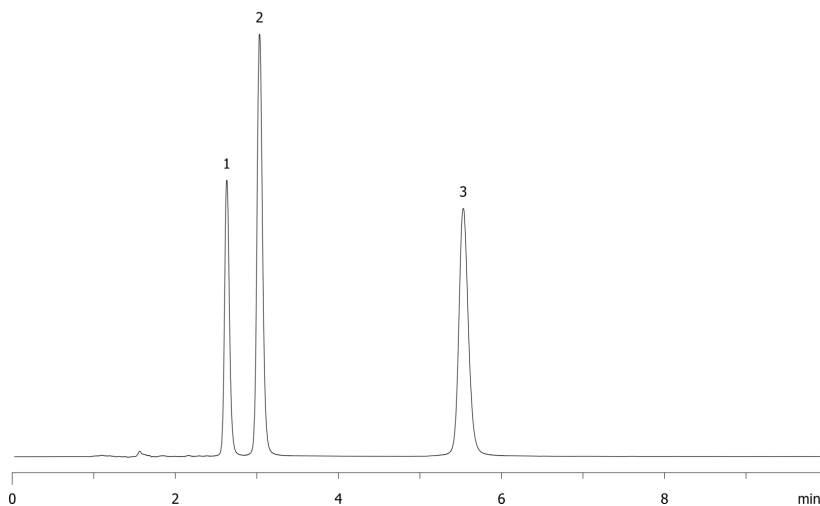
- Holder Part No.: KJ0-4282



Products used in this application:



15821



ANALYTES:

- 1** Pindolol
Retention Time: 2.631 min
- 2** Metoprolol
Retention Time: 3.033 min
- 3** Propanolol
Retention Time: 5.531 min

