

HPLC Application

ID No.: 15851

Tricyclic Antidepressants at High pH on Gemini 5um C18

Column: Gemini® 5 µm C18 110 Å, LC Column 150 x 4.6 mm, Ea

Dimensions: 150 x 4.6 mm ID

Order No: 00F-4435-E0

Elution Type: Isocratic

Eluent A: 10mM ammonium bicarbonate pH10.5

Eluent B: Acetonitrile

Eluent C: Methanol

Gradient Profile:	Step No.	Time (min)	Pct A	Pct B	Pct C
	1	0	30	25	45

Flow Rate: 1.5 mL/min

Col. Temp.: ambient

Detection: UV-Vis Abs.-Variable Wave.(UV) @ 254 nm (ambient)

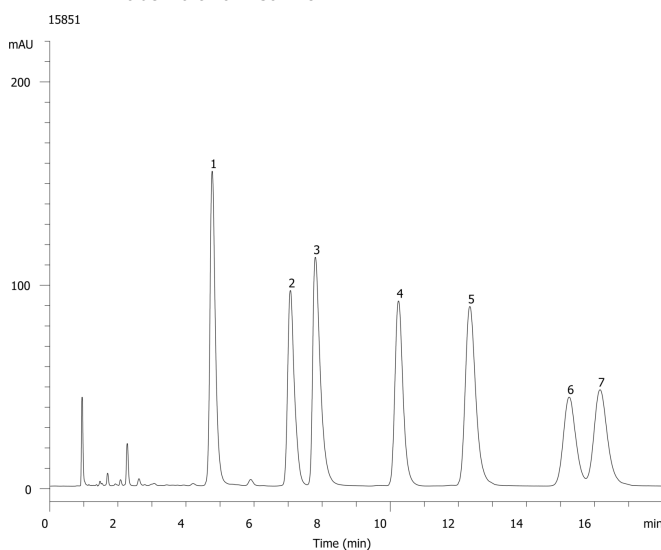
Analyst Note: SecurityGuard™ Guard Cartridge System extends column lifetime.

- SecurityGuard Cartridges, Gemini C18 4 x 3.0mm, 10/Pk Part No.: AJ0-7597

- Holder Part No.: KJ0-4282



Products used in this application:



ANALYTES:

- 1 Nordoxepin
- 2 Doxepin
- 3 Nortriptyline
- 4 Imipramine
- 5 Amitriptyline
- 6 Clomipramine
- 7 Trimipramine

