

EPA Method 8260 - Volatile Organic Analysis on Zebron ZB-624 20m x 0.18mm x 1.00um

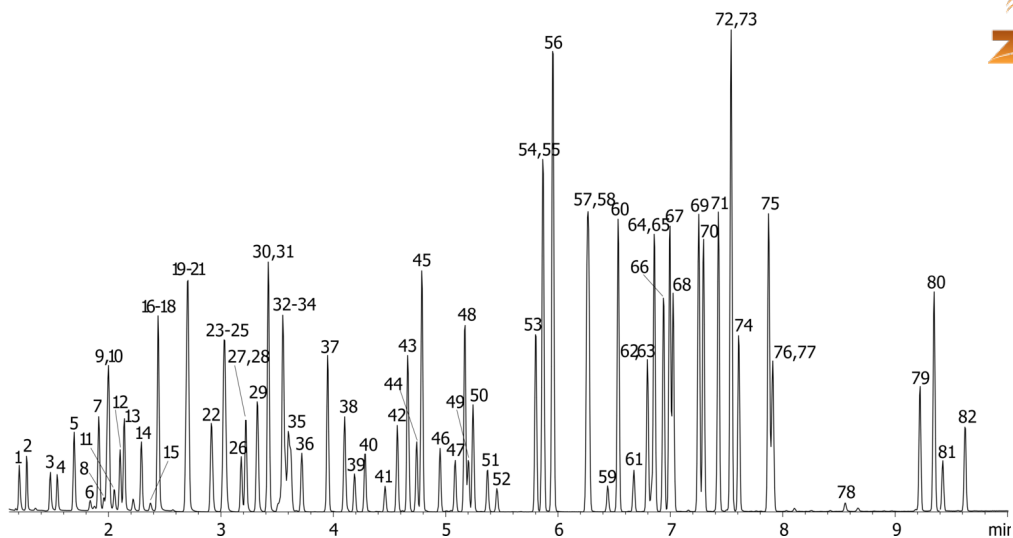
Column: Zebron™ ZB-624, GC Cap. Column 20 m x 0.18 mm x 1.00 µm, Ea
Phase: 6% Cyanopropylphenyl 94% Dimethylpolysiloxane
Dimensions: 20 meters x 0.18 mm x 1 µm
Order No: 7FD-G005-22
Oven Profile: 35°C to 210°C

Carrier Gas: Constant Flow Helium, 0 mL/min
Injection: Purge and Trap :1 0 µL @ 0°C
Detection: Mass Selective (MSD) (0°C)

15866



Products used in this application:



EPA Method 8260 - Volatile Organic Analysis on Zebron ZB-624 20m x 0.18mm x 1.00um

ANALYTES:

1	Chloromethane	41	2-Chloroethyl vinyl ether	81	Naphthalene
2	Vinyl chloride	42	cis-1,3-Dichloropropene	82	1,2,3-Trichlorobenzene
3	Bromomethane	43	Methyl isobutyl ketone		
4	Chloroethane	44	Toluene-d8		
5	Trichlorofluoromethane	45	Toluene		
6	Ethanol	46	trans-1,3-Dichloropropene		
7	Dichlorotrifluoroethane	47	1,1,2-Trichloroethane		
8	Acrolein	48	Tetrachloroethene		
9	Trichlorotrifluoroethane	49	1,3-Dichloropropane		
10	1,1-Dichloroethene	50	2-Hexanone		
11	Acetone	51	Dibromochloromethane		
12	Methyl iodide	52	Ethylene dibromide		
13	Carbon disulfide	53	Chlorobenzene		
14	Methylene chloride	54	1,1,1,2-Tetrachloroethane		
15	t-Butanol	55	Ethylbenzene		
16	trans-1,2-Dichloroethene	56	m/p-Xylene		
17	Methyl tert-butyl ether	57	o-Xylene		
18	Acrylonitrile	58	Styrene		
19	1,1-Dichloroethane	59	Bromoform		
20	Vinyl acetate	60	Isopropylbenzene		
21	Diisopropyl ether	61	4-Bromofluorobenzene		
22	Ethyl-t-butyl ether	62	1,1,2,2-Tetrachloroethane		
23	2,2-Dichloropropane	63	Bromobenzene		
24	cis-1,2-Dichloroethene	64	1,2,3-Trichloropropane		
25	2-Butanone	65	n-Propylbenzene		
26	Bromochloromethane	66	2-Chlorotoluene		
27	Chloroform	67	1,3,5-Trimethylbenzene		
28	Tetrahydrofuran	68	4-Chlorotoluene		
29	1,1,1-Trichloroethane	69	tert-Butylbenzene		
30	1,1-Dichloropropene	70	1,2,4-Trimethylbenzene		
31	Carbon tetrachloride	71	sec-Butylbenzene		
32	1,2-Dichloroethane-d4	72	1,3-Dichlorobenzene		
33	Benzene	73	4-Isopropyltoluene		
34	1,2-Dichloroethane	74	1,4-Dichlorobenzene		
35	t-Amyl methyl ether	75	n-Butylbenzene		
36	Fluorobenzene	76	1,2-Dichlorobenzene-d4		
37	Trichloroethene	77	1,2-Dichlorobenzene		
38	1,2-Dichloropropane	78	1,2-Dibromo-3-chloropropane		
39	Dibromomethane	79	1,2,4-Trichlorobenzene		
40	Bromodichloromethane	80	Hexachlorobutadiene		

