

GC Application

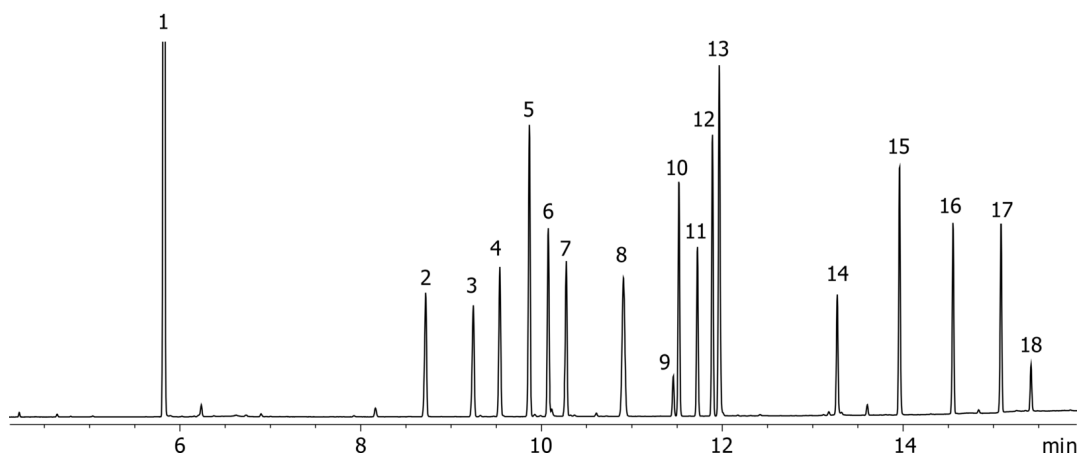
ID No.: 15869

Drug Screen on Zebron ZB-1MS 12m x 0.20mm x 0.33um

Column: Zebron[™] ZB-1MS, GC Cap. Column 12 m x 0.20 mm x 0.33 μ m, Ea
Phase: 100% Dimethylpolysiloxane
Dimensions: 12 meters x 0.2 mm x 0.33 μ m
Order No: 7DE-G011-14
Oven Profile: 50°C for 1 min to 150°C at 25°C/min to 200°C at 12°C/min to 325°C at 20°C/min for 0.5min
Carrier Gas: Constant Flow Helium, 1 mL/min
Injection: Split 20:1 1 μ L @ 230°C
Detection: Flame Ionization (FID) (330°C)
15869



Products used in this application:



Drug Screen on Zebron ZB-1MS 12m x 0.20mm x 0.33um

ANALYTES:

- 1 Nicotine
- 2 Pentobarbital
- 3 Caffeine
- 4 Glutethimide
- 5 Lidocaine
- 6 Phencyclidine
- 7 Phenobarbital
- 8 EDDP
- 9 Methaqualone
- 10 Methadone
- 11 Cocaine
- 12 Trimipramine
- 13 Desipramine
- 14 Heroin
- 15 Fentanyl
- 16 Ibogaine
- 17 Triazolam
- 18 LSD

