

# GC Application

ID No.: 15877

## Even FAMES on ZB-WAXplus

**Column:** Zebron<sup>™</sup> ZB-WAXplus<sup>™</sup>, GC Cap. Column 20 m x 0.18 mm x 0.18 μm, Ea

**Phase:** Polyethylene Glycol (PEG)

**Dimensions:** 20 meters x 0.18 mm x 0.18 μm

**Order No:** 7FD-G013-08

**Oven Profile:** 60°C to 240°C at 20°C/min for 5 min

**Carrier Gas:** Constant Flow Helium, 1 mL/min

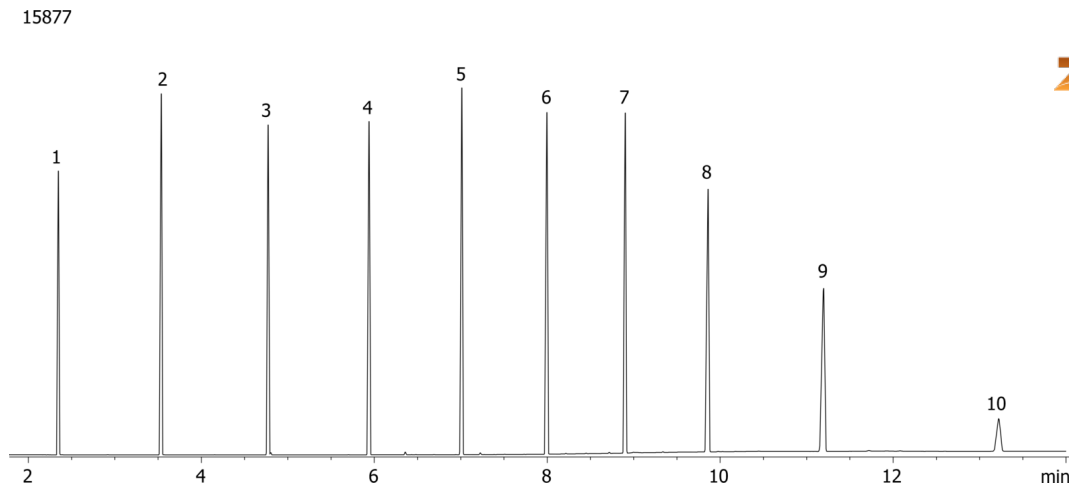
**Injection:** Split 40:1 0.2 μL @ 240°C

**Detection:** Flame Ionization (FID) (250°C)

**Analyst Note:** All analytes are 1mg/mL, except C24 at 0.3mg/mL



Products used in this application:



## Even FAMES on ZB-WAXplus

### ANALYTES:

- 1 Methyl caproate (C6)
- 2 Methyl caprylate (C8)
- 3 Methyl caprate (C10)
- 4 Methyl laurate (C12)
- 5 Methyl myristate (C14)
- 6 Methyl palmitate (C16)
- 7 Methyl stearate (C18)
- 8 Methyl arachidate (C20)
- 9 Methyl behenate (C23)
- 10 Methyl lignocerate (C24)

