

Blood Alcohols on ZB-WAXplus

Column: Zebron[™] ZB-WAXplus[™], GC Cap. Column 30 m x 0.25 mm x 0.25 μm, Ea

Phase: Polyethylene Glycol (PEG)

Dimensions: 30 meters x 0.25 mm x 0.25 μm

Order No: 7HG-G013-11

Oven Profile: 65°C isothermal

Carrier Gas: Constant Flow Helium, 1.5 mL/min

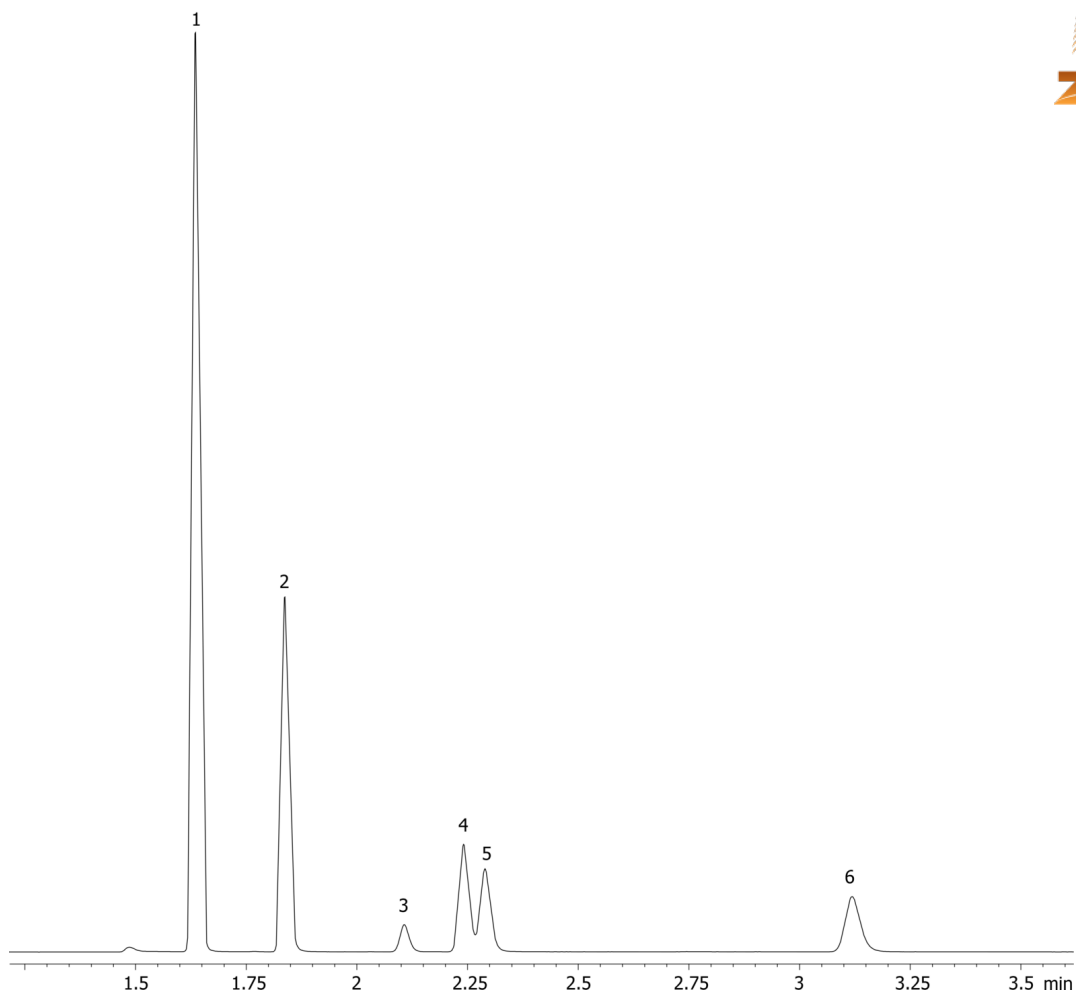
Injection: Split 20:1 50 μL @ 225°C

Detection: Flame Ionization (FID) (250°C)

15880



Products used in this application:



ANALYTES:

- 1 Acetaldehyde
- 2 Acetone
- 3 Methanol
- 4 Isopropanol
- 5 Ethanol
- 6 n-Propanol

