

HPLC Application

ID No.: 15885

Antidepressants pH 10.5 using Gemini 5u C6-Phenyl

Column: Gemini[®] 5 μ m C6-Phenyl 110 \AA , LC Column 150 x 4.6 mm, Ea

Dimensions: 150 x 4.6 mm ID

Order No: 00F-4444-E0

Elution Type: Isocratic

Eluent A: 10mM Ammonium Bicarbonate pH 10.5

Eluent B: Acetonitrile

Eluent C: Methanol

Gradient Profile:	Step No.	Time (min)	Pct A	Pct B	Pct C
	1	0	30	35	35

Flow Rate: 1 mL/min

Col. Temp.: ambient

Detection: UV-Vis Abs.-Variable Wave.(UV) @ 254 nm (ambient)

Analyst Note: SecurityGuard[™] Guard Cartridge System extends column lifetime.

- SecurityGuard Cartridges, Gemini C6-Phenyl 4 x 3.0mm, 10/Pk Part No.: AJ0-7915

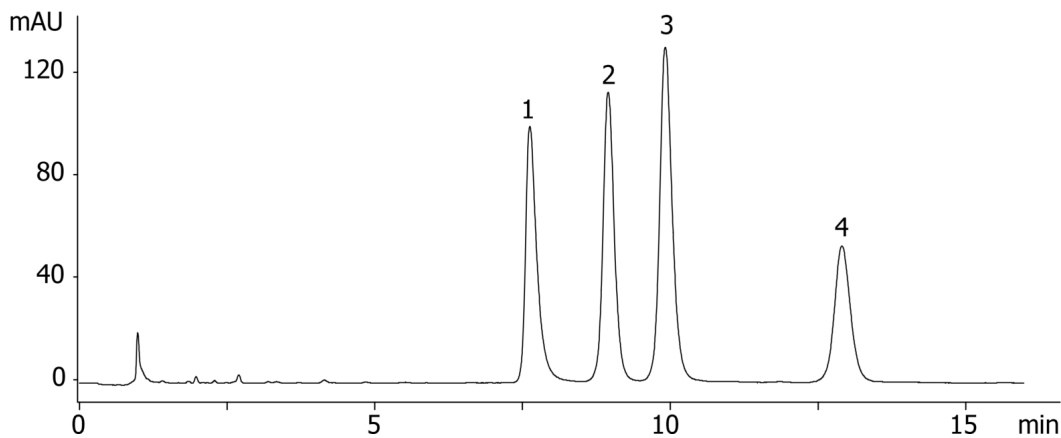
- Holder Part No.: KJ0-4282



Products used in this application:



15885



ANALYTES:

- 1 Imipramine
- 2 Nortriptyline
- 3 Amitriptyline
- 4 Clomipramine

