

# HPLC Application

ID No.: 15889

## Beta Blockers pH 10.5 using Gemini 5u C6-Phenyl

**Column:** Gemini<sup>®</sup> 5  $\mu$ m C6-Phenyl 110 Å, LC Column 150 x 4.6 mm, Ea

**Dimensions:** 150 x 4.6 mm ID

**Order No:** 00F-4444-E0

**Elution Type:** Isocratic

**Eluent A:** 10mM Ammonium Bicarbonate pH 10.5

**Eluent B:** Methanol

Gradient Profile:	Step No.	Time (min)	Pct A	Pct B
	1	0	50	50

**Flow Rate:** 1 mL/min

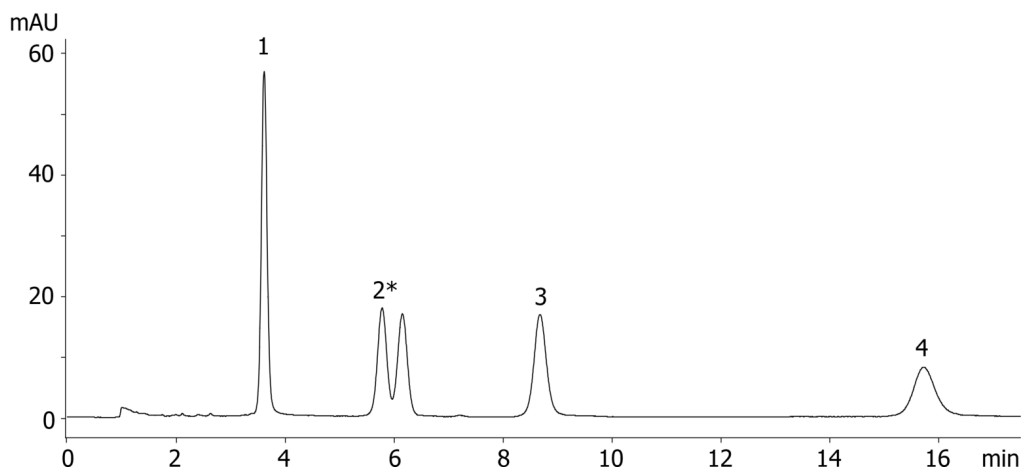
**Col. Temp.:** ambient

**Detection:** UV-Vis Abs.-Variable Wave.(UV) @ 230 nm (ambient)

**Analyst Note:** \* Note the unique selectivity for separating the diastereomers of Labetolol (Peak No. 2)  
15889



Products used in this application:



### ANALYTES:

- 1 Atenolol
- 2 Labetalol
- 3 Pindolol
- 4 Metoprolol

