

# HPLC Application

ID No.: 15891

## Soft Drink Application using Gemini 5u C6-Phenyl

**Column:** Gemini<sup>®</sup> 5  $\mu$ m C6-Phenyl 110 Å, LC Column 150 x 4.6 mm, Ea

**Dimensions:** 150 x 4.6 mm ID

**Order No:** 00F-4444-E0

**Elution Type:** Isocratic

**Eluent A:** 20mM Potassium Phosphate pH 2.5

**Eluent B:** Methanol

Gradient Profile:	Step No.	Time (min)	Pct A	Pct B
	1	0	55	45

**Flow Rate:** 1 mL/min

**Col. Temp.:** ambient

**Detection:** UV-Vis Abs.-Variable Wave.(UV) @ 220 nm (ambient)

**Analyst Note:** SecurityGuard<sup>™</sup> Guard Cartridge System extends column lifetime.

- SecurityGuard Cartridges, Gemini C6-Phenyl 4 x 3.0mm, 10/Pk Part No.: AJ0-7915

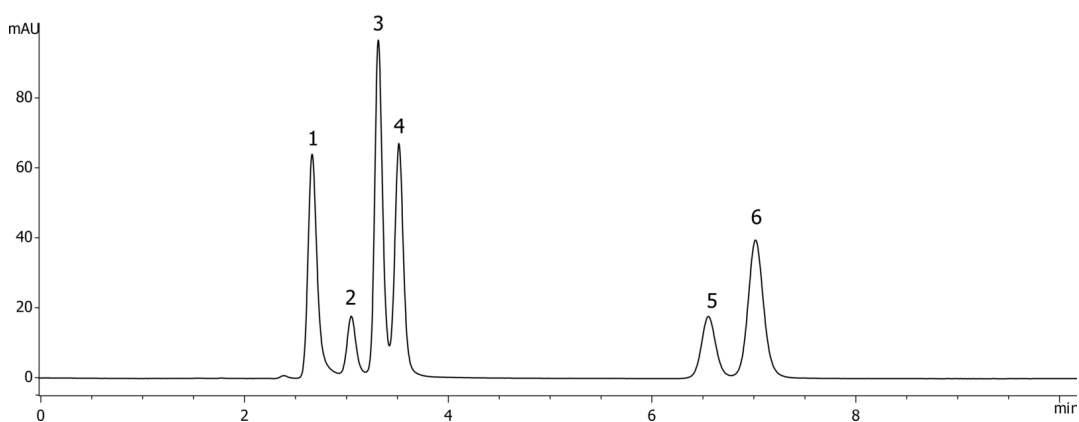
- Holder Part No.: KJ0-4282



Products used in this application:



15891



### ANALYTES:

- 1 Quinine
- 2 Aspartame
- 3 Saccharin
- 4 Caffeine
- 5 Sorbic acid
- 6 Benzoic acid

