

HPLC Application

ID No.: 15902

Food Additives using Gemini 5u C6-Phenyl

Column: Gemini[®] 5 μ m C6-Phenyl 110 Å, LC Column 150 x 4.6 mm, Ea

Dimensions: 150 x 4.6 mm ID

Order No: 00F-4444-E0

Elution Type: Isocratic

Eluent A: 20mM Potassium Phosphate pH 2.5

Eluent B: Acetonitrile

Gradient Profile:	Step No.	Time (min)	Pct A	Pct B
	1	0	75	25

Flow Rate: 1 mL/min

Col. Temp.: ambient

Detection: UV-Vis Abs.-Variable Wave.(UV) @ 220 nm (ambient)

Analyst Note: SecurityGuard[™] Guard Cartridge System extends column lifetime.

- SecurityGuard Cartridges, Gemini C6-Phenyl 4 x 3.0mm, 10/Pk Part No.: AJ0-7915

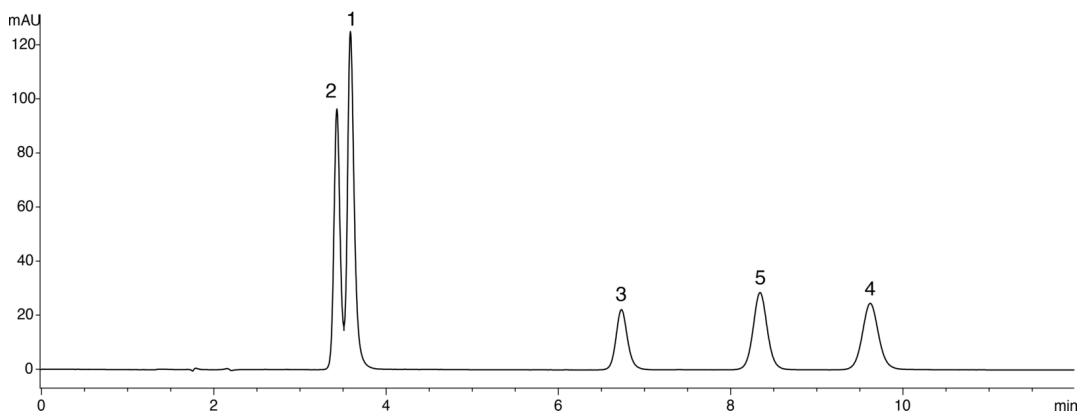
- Holder Part No.: KJ0-4282



Products used in this application:



15902



ANALYTES:

- 1 p-Hydroxybenzoic acid
- 2 Saccharine
- 3 Sorbic acid
- 4 Methyl paraben
- 5 Dehydroacetic acid

