

# GC Application

ID No.: 15909

## Grob Mix on ZB-WAXplus

**Column:** Zebron<sup>™</sup> ZB-WAXplus<sup>™</sup>, GC Cap. Column 30 m x 0.25 mm x 0.25 μm, Ea

**Phase:** Polyethylene Glycol (PEG)

**Dimensions:** 30 meters x 0.25 mm x 0.25 μm

**Order No:** 7HG-G013-11

**Oven Profile:** 45°C to 75°C at 6°C/min to 220°C at 30°C/min for 3 min

**Carrier Gas:** Constant Flow Helium, 1 mL/min

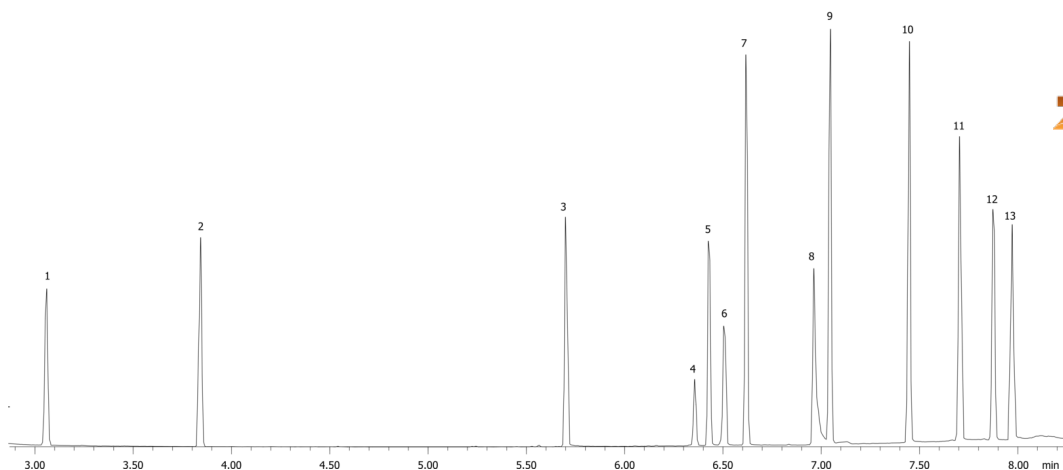
**Injection:** Split 40:1 0.2 μL @ 250°C

**Detection:** Mass Selective (MSD) (250°C)

15909



Products used in this application:



## Grob Mix on ZB-WAXplus

### ANALYTES:

- 1 Decane
- 2 Undecane
- 3 Nonanal
- 4 2,3-Butanediol
- 5 1-Octanol
- 6 2,3-Butanediol
- 7 Methyl decanoate
- 8 Dicyclohexylamine
- 9 Methyl undecanoate
- 10 Methyl dodecanoate
- 11 2,6-Dimethylaniline
- 12 2,6-Dimethylphenol
- 13 2-Ethylhexanoic acid

