

GC Application

ID No.: 15911

Ethylene and Propylene Glycols on ZB-WAXplus

Column: Zebtron[™] ZB-WAXplus[™], GC Cap. Column 30 m x 0.25 mm x 0.25 μm, Ea

Phase: Polyethylene Glycol (PEG)

Dimensions: 30 meters x 0.25 mm x 0.25 μm

Order No: 7HG-G013-11

Oven Profile: 80°C to 200°C at 8°C/min

Carrier Gas: Constant Flow Helium, 1.2 mL/min

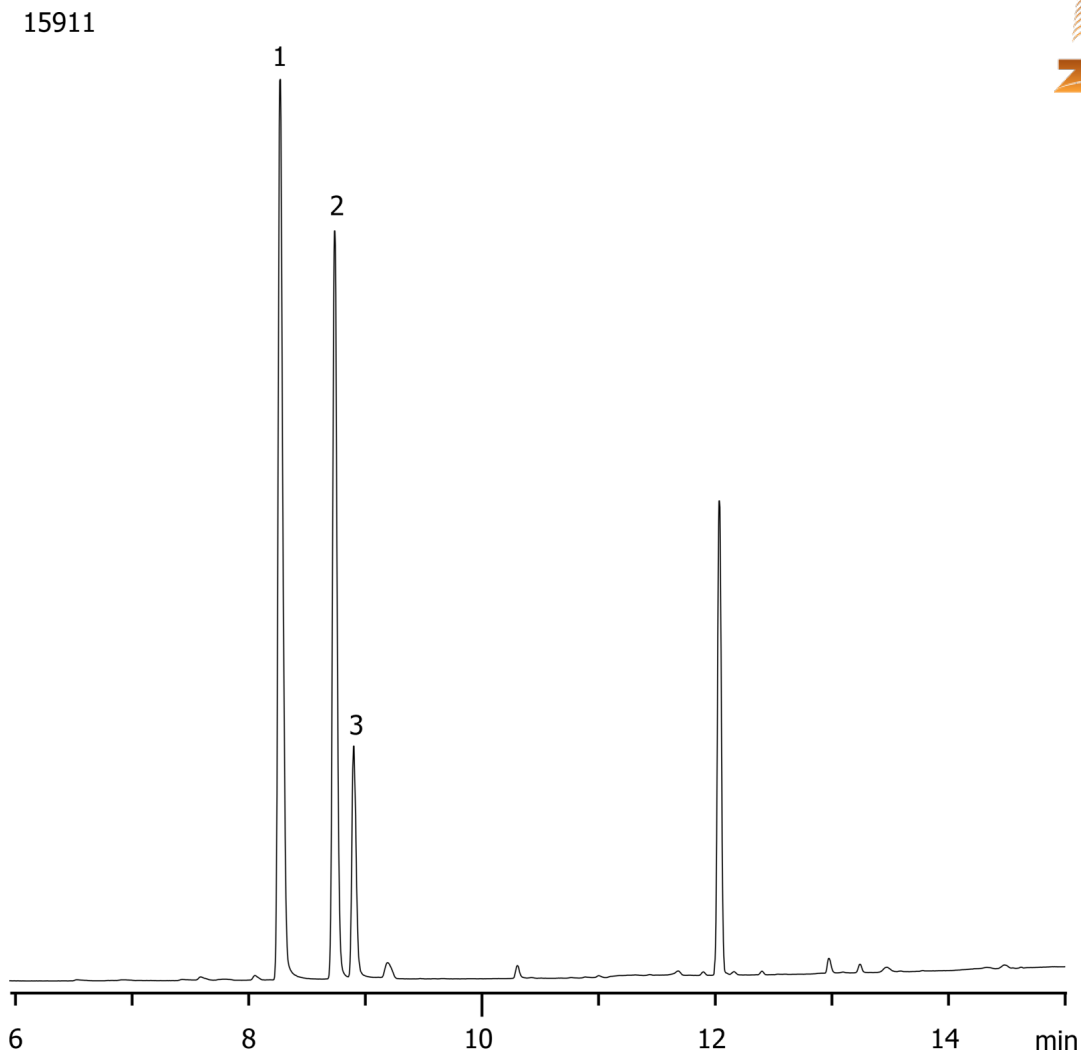
Injection: Splitless :1 0.2 μL @ 140°C

Detection: Flame Ionization (FID) (250°C)

Analyst Note: Analytes are 100ppm in HPLC water



Products used in this application:



ANALYTES:

- 1 Propylene glycol
- 2 Ethylene glycol
- 3 HPLC water contaminant

