

## Glycols on ZB-WAXplus

**Column:** Zebron™ ZB-WAXplus™, GC Cap. Column 30 m x 0.32 mm x 0.50 µm, Ea

**Phase:** Polyethylene Glycol (PEG)

**Dimensions:** 30 meters x 0.32 mm x 0.5 µm

**Order No:** 7HM-G013-17

**Oven Profile:** 80°C to 210°C at 25°C/min for 6 min

**Carrier Gas:** Constant Flow Helium, 1.8 mL/min

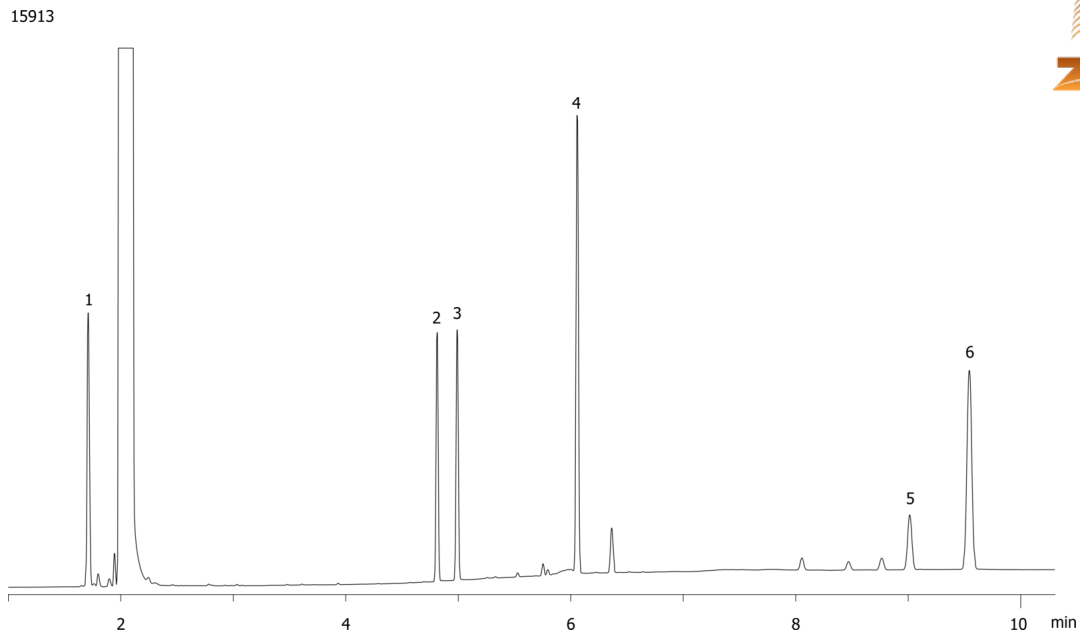
**Injection:** Split 20:1 1 µL @ 220°C

**Detection:** Flame Ionization (FID) (250°C)

**Analyst Note:** Analytes are 100ppm in Dichloromethane



Products used in this application:



### ANALYTES:

- 1 Ethylene glycol dimethyl ether
- 2 Propylene glycol
- 3 Ethylene glycol
- 4 Ethylene glycol dimethacrylate
- 5 Ethylene glycol diglycidyl ether
- 6 Ethylene glycol phenyl methacrylate

