

Solvents on ZB-WAXplus 30x0.25x0.25

Column: Zebtron™ ZB-WAXplus™, GC Cap. Column 30 m x 0.25 mm x 0.25 µm, Ea

Phase: Polyethylene Glycol (PEG)

Dimensions: 30 meters x 0.25 mm x 0.25 µm

Order No: 7HG-G013-11

Oven Profile: 30°C for 1min to 70°C at 14°C/min to 220°C at 25°C/min for 3 min

Carrier Gas: Constant Flow Helium, 1.2 mL/min

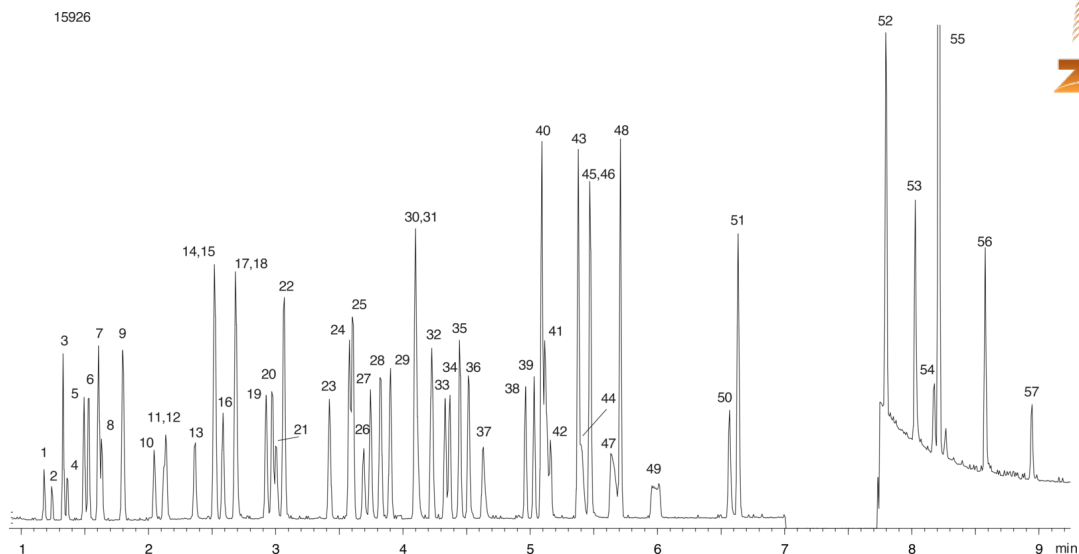
Injection: Split 50:1 0.2 µL @ 220°C

Detection: Mass Selective (MSD) (250°C)

Analyst Note: All analytes are 85 ppm in DMA



Products used in this application:



Solvents on ZB-WAXplus 30x0.25x0.25

ANALYTES:

1	air	41	Butanol
2	Pentane	42	Nitromethane
3	Hexane	43	Cumene
4	Ethyl ether	44	2-Methoxy ethanol
5	2-Methoxy-2-methyl-2-propane	45	Pyridine
6	Heptane	46	o-Xylene
7	Cyclohexane	47	3-Methyl butanol
8	1,1-Dichloroethene	48	Chlorobenzene
9	Methylcyclohexane	49	n-Pentanol
10	Acetone	50	DMF
11	Formic acid ethyl ester	51	Anisole
12	Acetic acid methyl ester (methyl acetate)	52	Tetralin
13	Tetrahydrofuran	53	Dimethyl sulfoxide
14	Carbon tetrachloride	54	Ethylene glycol
15	1,1,1-Trichloroethane	55	Methylacetamide
16	Ethyl acetate	56	N-Methylpyrrolidinone
17	Acetic acid-1-methyl ethyl ester	57	Formamide
18	2-Butanone		
19	1,2-Dimethoxyethane		
20	Dichloromethane		
21	Isopropanol		
22	Benzene		
23	Propyl acetate		
24	1,2-Dichloroethene		
25	Trichloroethylene		
26	Acetonitrile		
27	Methylisobutylketone (MIBK)		
28	Isobutyl acetate		
29	Chloroform		
30	Toluene		
31	n-Propanol		
32	Water		
33	1,4-Dioxane		
34	1,2-Dichloroethane		
35	Butyl acetate		
36	2-Hexanone		
37	2-Methylpropanol		
38	Ethylbenzene		
39	p-Xylene		
40	m-Xylene		

