

# GC Application

ID No.: 15951

## Common Solvents on ZB-1MS

**Column:** Zebtron<sup>™</sup> ZB-1MS, GC Cap. Column 30 m x 0.25 mm x 1.00  $\mu$ m, Ea

**Phase:** 100% Dimethylpolysiloxane

**Dimensions:** 30 meters x 0.25 mm x 1  $\mu$ m

**Order No:** 7HG-G011-22

**Oven Profile:** 50°C for 4.5 min to 120°C at 20°C/min

**Carrier Gas:** Constant Flow Helium, 3.2 mL/min

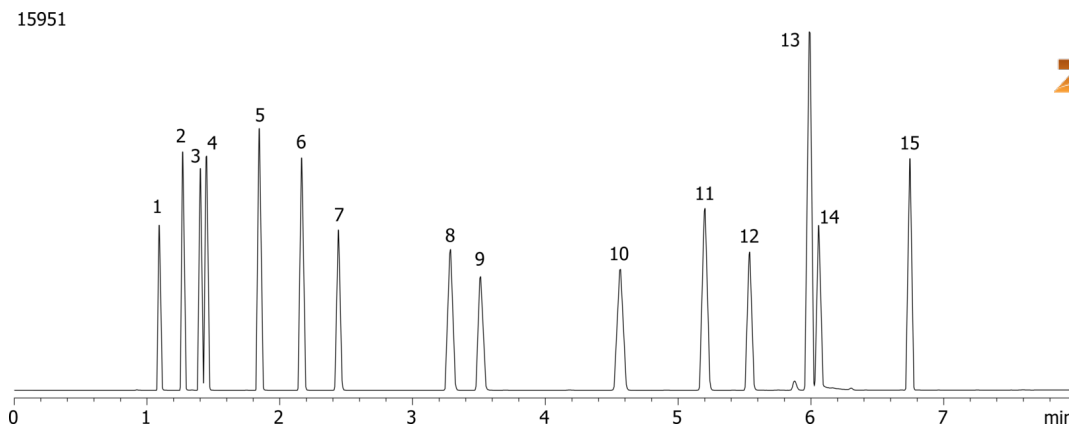
**Injection:** Split 15:1 200  $\mu$ L @ 120°C

**Detection:** Flame Ionization (FID) (250°C)

**Analyst Note:** analyte concentration was 0.05mg of each analyte per 20mL headspace vial



Products used in this application:



## Common Solvents on ZB-1MS

### ANALYTES:

- 1 Methanol
- 2 Ethanol
- 3 Acetone
- 4 Isopropyl alcohol
- 5 n-Propanol
- 6 Methyl ethyl ketone
- 7 Ethyl acetate
- 8 Isopropyl acetate
- 9 Methoxypropanol (Propylene glycol monomethyl ether)
- 10 n-Propyl acetate
- 11 Methyl isobutyl ketone
- 12 3-Ethoxy propanol (Propylene glycol  $\tilde{\text{Y}}$ -monoethyl ether)
- 13 Toluene
- 14 2,4-Pentanedione
- 15 n-Butyl acetate

