

GC Application

ID No.: 15954

Common Solvents on ZB-624

Column: Zebron[™] ZB-624, GC Cap. Column 20 m x 0.18 mm x 1.00 μ m, Ea

Phase: 6% Cyanopropylphenyl 94% Dimethylpolysiloxane

Dimensions: 20 meters x 0.18 mm x 1 μ m

Order No: 7FD-G005-22

Oven Profile: 40°C for 4 min to 150°C at 15°C/min

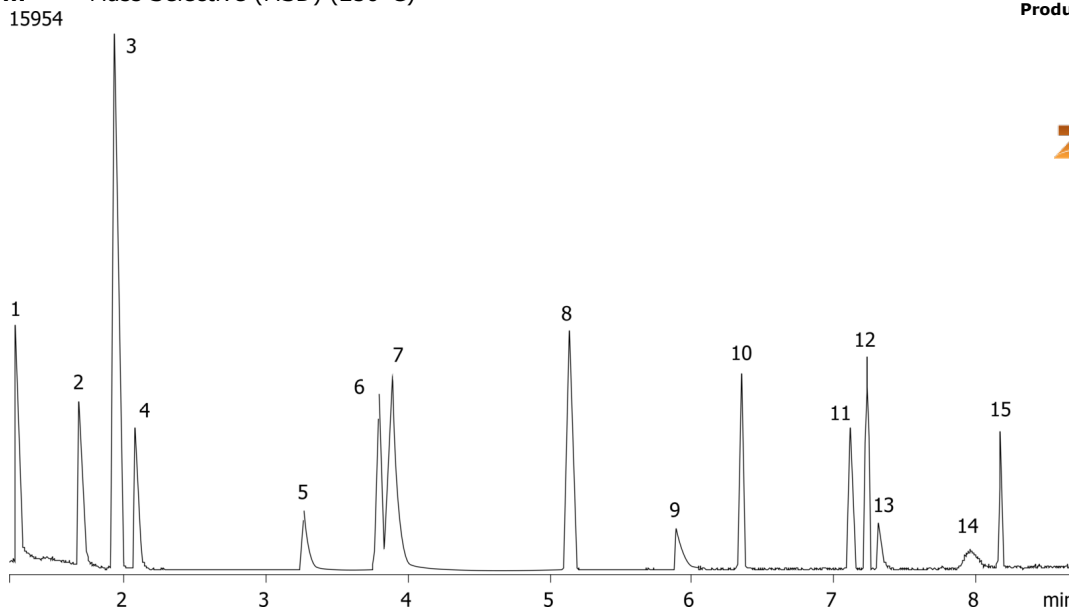
Carrier Gas: Constant Flow Helium, 1 mL/min

Injection: Split 25:1 4 μ L @ 100°C

Detection: Mass Selective (MSD) (250°C)



Products used in this application:



Common Solvents on ZB-624

ANALYTES:

- 1 Methanol
- 2 Ethanol
- 3 Acetone
- 4 Isopropyl alcohol
- 5 n-Propanol
- 6 Methyl ethyl ketone
- 7 Ethyl acetate
- 8 Isopropyl acetate
- 9 Methoxypropanol (Propylene glycol monomethyl ether)
- 10 n-Propyl acetate
- 11 Methyl isobutyl ketone
- 12 Toluene
- 13 3-Ethoxy propanol (Propylene glycol monoethyl ether)
- 14 2,4-Pentanedione
- 15 n-Butyl acetate

