

GC Application

ID No.: 15955

Alcohols on ZB-WAXplus 30x0.25x0.25

Column: Zebron[™] ZB-WAXplus[™], GC Cap. Column 30 m x 0.25 mm x 0.25 μm, Ea

Phase: Polyethylene Glycol (PEG)

Dimensions: 30 meters x 0.25 mm x 0.25 μm

Order No: 7HG-G013-11

Oven Profile: 40°C to 75°C at 6°C/min to 220°C at 30°C/min for 3 min

Carrier Gas: Constant Flow Helium, 1.2 mL/min

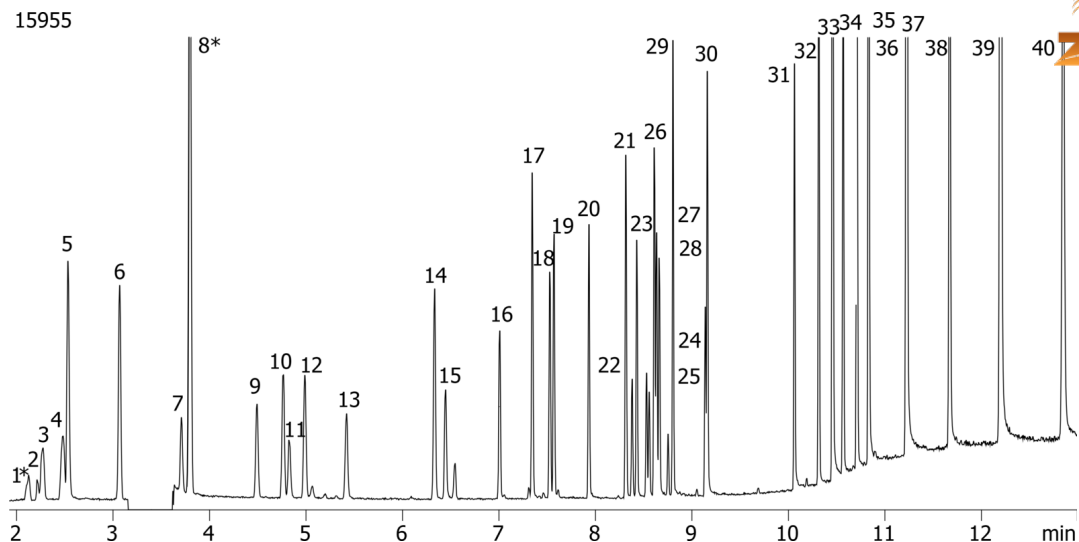
Injection: Split 40:1 0.5 μL @ 170°C

Detection: Mass Selective (MSD) (250°C)

Analyst Note: * indicates solvent impurity. Analytes are 365ppm in chloroform.



Products used in this application:



Alcohols on ZB-WAXplus 30x0.25x0.25

ANALYTES:

- 1 1,1-Dichloroethane
- 2 Methanol
- 3 tert-Butanol
- 4 Isopropanol
- 5 Ethanol
- 6 1,2-Dichloroethylene
- 7 Propanol
- 8 Bromochloromethane
- 9 2-Methylpropanol
- 10 3-Pentanol
- 11 Allyl alcohol
- 12 2-Pentanol
- 13 Butanol
- 14 3-Hexanol
- 15 Methallyl alcohol
- 16 Pentanol
- 17 4-Heptanol
- 18 Cyclopentanol
- 19 2-Ethyl-1-butanol
- 20 Hexanol
- 21 Cyclohexanol
- 22 cis-2-Methylcyclohexanol
- 23 trans-2-Methylcyclohexanol
- 24 cis-3-Methylcyclohexanol
- 25 cis-4-Methylcyclohexanol
- 26 Heptanol
- 27 trans-3-Methylcyclohexanol
- 28 trans-4-Methylcyclohexanol
- 29 2-Ethyl-1-hexanol
- 30 Octanol
- 31 Decanol
- 32 Phenylethanol
- 33 Undecanol
- 34 Phenylmethanol
- 35 2-Phenylethanol
- 36 Dodecanol
- 37 Tridecanol
- 38 Tetradecanol
- 39 Pentadecanol
- 40 Hexadecanol

