

GC Application

ID No.: 15977

MTBE in Gasoline on ZB-5ms 30x0.25x1.00

Column: Zebron[™] ZB-5MS, GC Cap. Column 30 m x 0.25 mm x 1.00 µm, Ea

Phase: 5% Phenyl-Arylene 95% Dimethylpolysiloxane

Dimensions: 30 meters x 0.25 mm x 1 µm

Order No: 7HG-G010-22

Oven Profile: 35°C for 3min to 100°C at 5°C/min

Carrier Gas: Constant Flow Helium, 1.1 mL/min

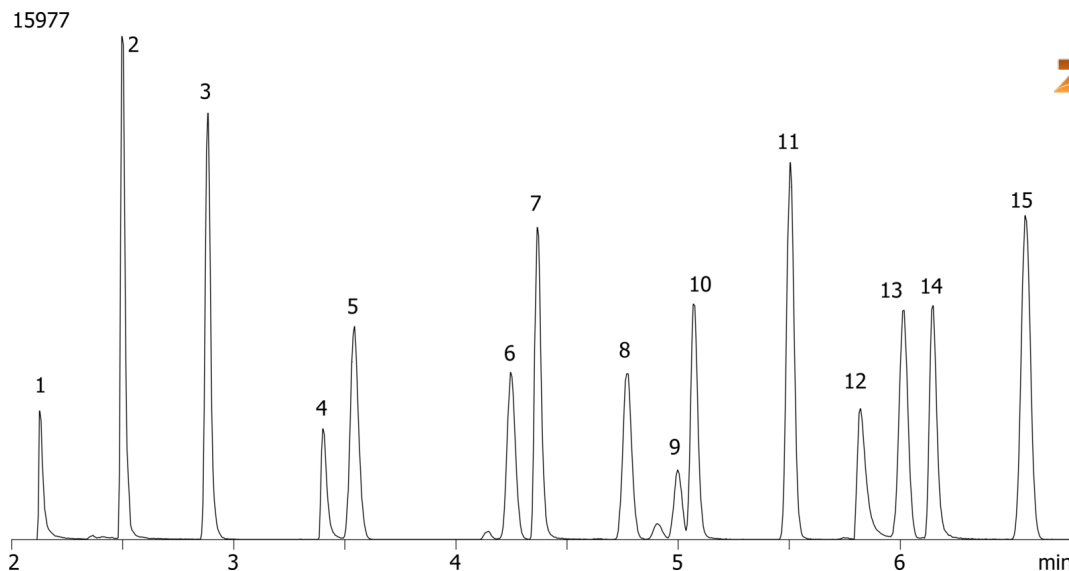
Injection: Split 15:1 0.5 µL @ 160°C

Detection: Mass Selective (MSD) (0°C)

Analyst Note: 150ppm in methanol



Products used in this application:



MTBE in Gasoline on ZB-5ms 30x0.25x1.00

ANALYTES:

- 1 Ethanol
- 2 Isopropyl alcohol
- 3 tert-Butanol
- 4 1-Propanol
- 5 Methyl tert-butyl ether
- 6 Isopropyl ether
- 7 2-Butanol
- 8 Ethyl tert-butyl ether
- 9 Methyl cyclopentane
- 10 Isobutyl alcohol
- 11 tert-Pentanol
- 12 1,2-Dimethoxyethane
- 13 Benzene
- 14 1-Butanol
- 15 2-Methoxy-2-methyl butane

