

# GC Application

ID No.: 15979

## Isopropanol Purity on ZB-624 30x0.32x1.8

**Column:** Zebtron™ ZB-624, GC Cap. Column 30 m x 0.32 mm x 1.80 μm, Ea  
**Phase:** 6% Cyanopropylphenyl 94% Dimethylpolysiloxane  
**Dimensions:** 30 meters x 0.32 mm x 1.8 μm  
**Order No:** 7HM-G005-31  
**Oven Profile:** 40°C for 4 min to 60°C at 5°C/min to 150 °C at 25°C/min for 2 min

**Carrier Gas:** Constant Flow Helium, 1.5 mL/min

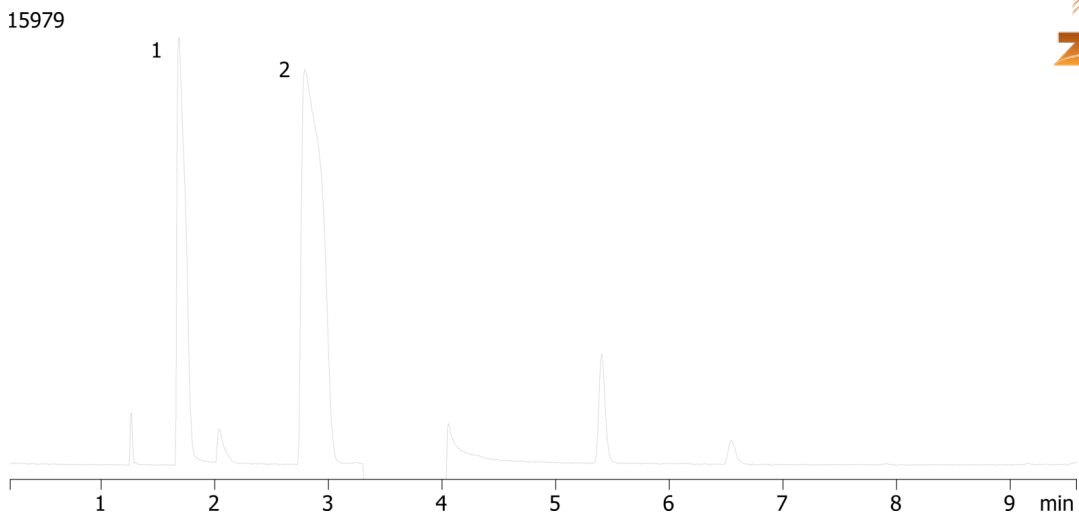
**Injection:** Split 15:1 1 μL @ 150°C

**Detection:** Mass Selective (MSD) (0°C)

**Analyst Note:** Ethanol at 0.5% concentration was used as the internal standard. RSD values for water were calculated at 1.8% with n = 3. Detector was turned off for isopropanol solvent peak at 3.3 min to 4.0 min to prevent detector



Products used in this application:



### ANALYTES:

- 1 Water
- 2 Ethanol