

# HPLC Application

ID No.: 15997

## Non-Polar Basic Drugs by Gemini 5u C6-Phenyl

**Column:** Gemini<sup>®</sup> 5  $\mu$ m C6-Phenyl 110  $\text{\AA}$ , LC Column 150 x 4.6 mm, Ea

**Dimensions:** 150 x 4.6 mm ID

**Order No:** 00F-4444-E0

**Elution Type:** Isocratic

**Eluent A:** 20mM Potassium phosphate buffer, pH 2.5

**Eluent B:** Methanol

Gradient Profile:	Step No.	Time (min)	Pct A	Pct B
	1	0	55	45

**Flow Rate:** 1.5 mL/min

**Col. Temp.:** ambient

**Detection:** UV-Vis Abs.-Variable Wave.(UV) @ 210 nm (ambient)

**Analyst Note:** N (diphenhydramine) = 5533

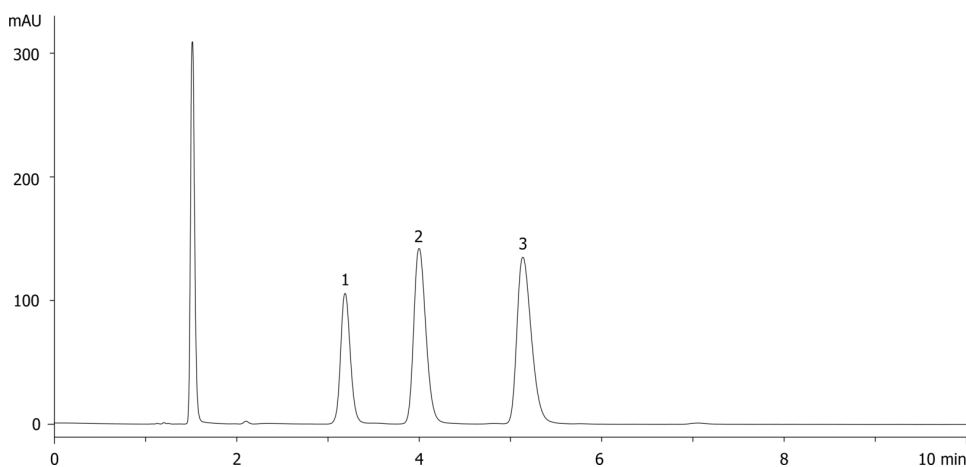
SYMM (diphenhydramine) = 0.65

Backpressure = 217 bar

15997



Products used in this application:



### ANALYTES:

- 1 Chlorpheniramine
- 2 Triprolidine
- 3 Diphenhydramine

