

# GC Application

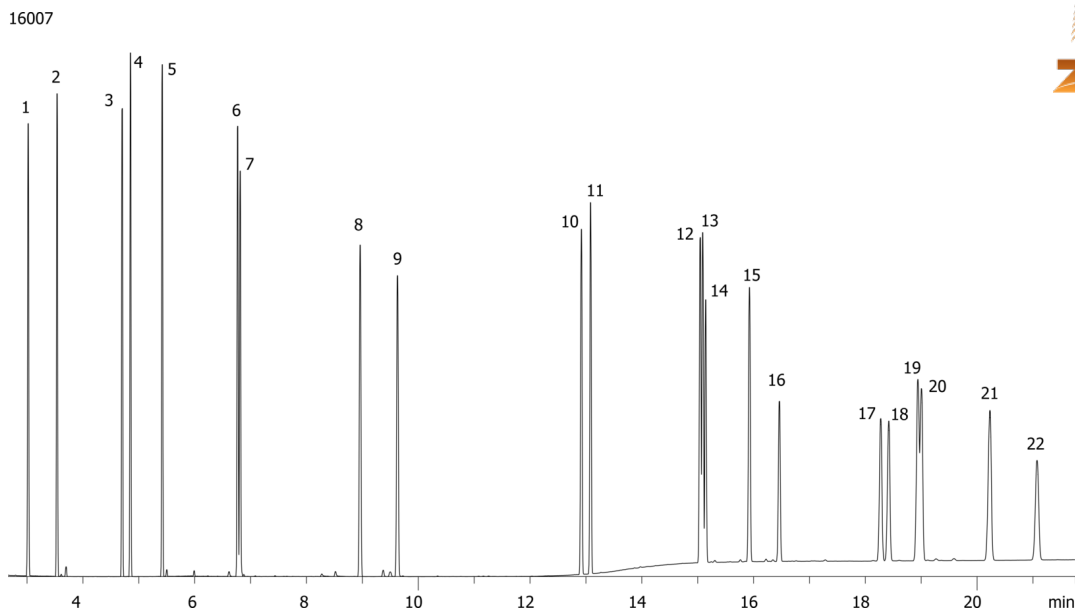
ID No.: 16007

## Extended PAHs on ZB-50 60x0.25x0.25

**Column:** Zebtron™ ZB-50, GC Cap. Column 60 m x 0.25 mm x 0.25 μm, Ea  
**Phase:** 50% Phenyl 50% Dimethylpolysiloxane  
**Dimensions:** 60 meters x 0.25 mm x 0.25 μm  
**Order No:** 7KG-G004-11  
**Oven Profile:** 140°C to 240°C at 20°C/min to 295°C at 10°C/min to 320°C at 30°C/min for 43 min  
**Carrier Gas:** Constant Flow Helium, 1.8 mL/min  
**Injection:** Split 20:1 1 μL @ 320°C  
**Detection:** Flame Ionization (FID) (325°C)  
**Analyst Note:** All samples are 20ppm in Dichloromethane



Products used in this application:



## Extended PAHs on ZB-50 60x0.25x0.25

### ANALYTES:

- 1 Naphthalene
- 2 2-Methylnaphthalene
- 3 Acenaphthalene
- 4 Acenaphthene
- 5 Fluorene
- 6 Phenanthrene
- 7 Anthracene
- 8 Fluoranthene
- 9 Pyrene
- 10 Benz[a]anthracene
- 11 Chrysene
- 12 Benzo[b]fluoranthene
- 13 Benzo[k]fluoranthene
- 14 Benzo[j]fluoranthene
- 15 Benzo[a]pyrene
- 16 3-Methylcholanthrene
- 17 Dibenz[a,h]acridine
- 18 Dibenz[a,,j]acridine
- 19 Dibenz[a,h]anthracene
- 20 Indeno[1,2,3-cd]pyrene
- 21 Benzo[g,h,i]perylene
- 22 7H-Dibenzo[c,g]carbazole

