

GC Application

ID No.: 16014

ASTM Method D2887 on ZB-1MS

Column: Zebtron[™] ZB-1MS, GC Cap. Column 20 m x 0.18 mm x 0.18 µm, Ea

Phase: 100% Dimethylpolysiloxane

Dimensions: 20 meters x 0.18 mm x 0.18 µm

Order No: 7FD-G011-08

Oven Profile: 50°C for 0.5min to 350°C at 30°C/min for 8min

Carrier Gas: Constant Flow Helium, 1.1 mL/min

Injection: Split 30:1 0.5 µL @ 340°C

Detection: Flame Ionization (FID) (360°C)

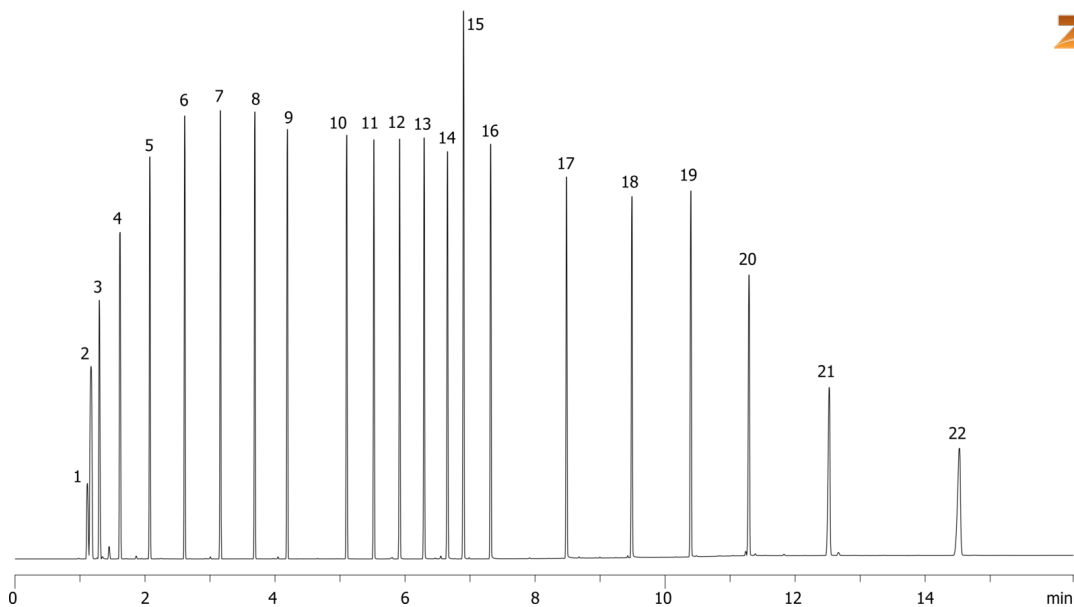
Analyst Note: All analytes are 0.1% in carbon disulfide



Products used in this application:



16014



ASTM Method D2887 on ZB-1MS

ANALYTES:

- 1 Pentane (C5)
- 2 contaminant
- 3 Hexane (C6)
- 4 Heptane (C7)
- 5 Octane (C8)
- 6 Nonane (C9)
- 7 Decane (C10)
- 8 Undecane (C11)
- 9 Dodecane (C12)
- 10 Tetradecane (C14)
- 11 Pentadecane (C15)
- 12 Hexadecane (C16)
- 13 Heptadecane (C17)
- 14 Octadecane (C18)
- 15 o-Terphenyl
- 16 Eicosane (C20)
- 17 Tetracosane (C24)
- 18 Octacosane (C28)
- 19 Dotriacontane (C32)
- 20 Hexatriacontane (C36)
- 21 Tetracontane (C40)
- 22 Tetratetracontane (C44)

