

# GC Application

ID No.: 16016

## Cold Pressed Orange Oil on ZB-1MS

**Column:** Zebtron<sup>™</sup> ZB-1MS, GC Cap. Column 10 m x 0.10 mm x 0.10 µm, Ea

**Phase:** 100% Dimethylpolysiloxane

**Dimensions:** 10 meters x 0.1 mm x 0.1 µm

**Order No:** 7CB-G011-02

**Oven Profile:** 60°C to 130°C at 10°C/min to 280°C at 30°C for 3min

**Carrier Gas:** Constant Flow Helium, 0.3 mL/min

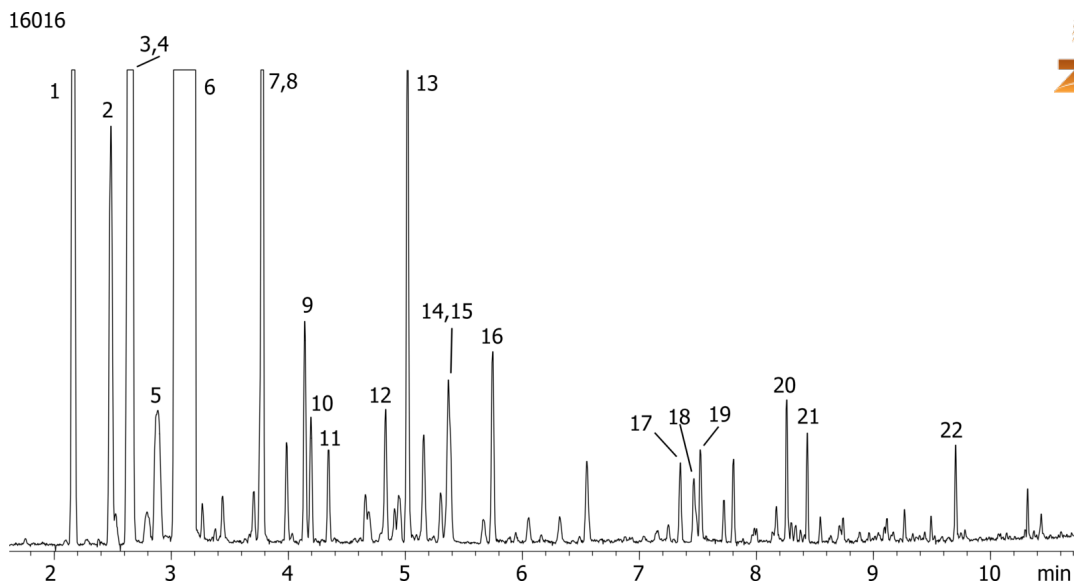
**Injection:** Split 120:1 0.2 µL @ 160°C

**Detection:** Mass Selective (MSD) (0°C)

**Analyst Note:** Sample was 10% in dichloromethane



Products used in this application:



## Cold Pressed Orange Oil on ZB-1MS

### ANALYTES:

- 1  $\alpha$ -Pinene
- 2 Sabinene
- 3 beta-Myrcene
- 4 Octanal
- 5 3-Carene
- 6 Limonene
- 7 Nonanal
- 8 Linalool
- 9 cis-Limonene oxide
- 10 trans-Limonene oxide
- 11 Citronellal
- 12  $\alpha$ -Terpineol
- 13 Decanal
- 14 Carvone
- 15 Neral
- 16 Geranial
- 17 alpha-Cubebene
- 18 b-Cubenene
- 19 Dodecanal
- 20 Valencene
- 21 Cadinene
- 22 Nootkatone

