

HPLC Application

ID No.: 16029

MercuryMS - Synergi 2.5µm Max-RP 20 x 4.0mm for Acid, Base, Neutral

Column: Synergi[™] 2.5 µm Max-RP 100 Å, LC Column 20 x 4 mm, Mercury, Ea

Dimensions: 20 x 4 mm ID

Order No: 00M-4372-D0-CE

Elution Type: Gradient

Eluent A: 0.1% Formic Acid in Water

Eluent B: 0.1% Formic Acid in Acetonitrile

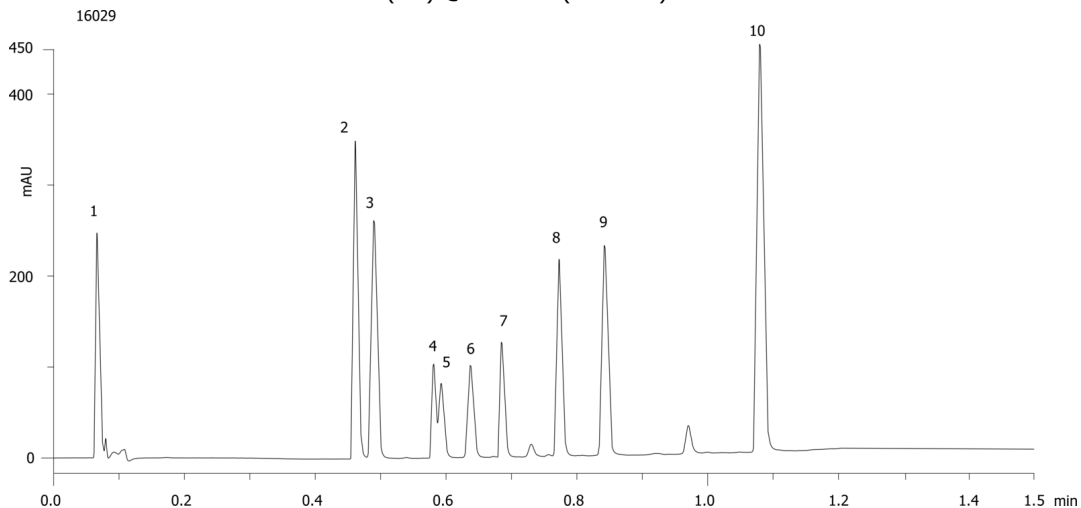
| Gradient Profile: | Step No. | Time (min) | Pct A | Pct B |
|--------------------------|-----------------|-------------------|--------------|--------------|
| | 1 | 0 | 95 | 5 |
| | 2 | 1 | 5 | 95 |
| | 3 | 1.01 | 95 | 5 |
| | 4 | 1.2 | 95 | 5 |



Flow Rate: 2.5 mL/min

Col. Temp.: ambient

Detection: UV-Vis Abs.-Variable Wave.(UV) @ 254 nm (ambient)



MercuryMS - Synergi 2.5 μ m Max-RP 20 x 4.0mm for Acid, Base, Neutral

ANALYTES:

- 1 Pyridine
- 2 Quinidine
- 3 Sulfathiazole
- 4 Triprolidine
- 5 Benzyl alcohol
- 6 Phenol
- 7 Nortriptyline
- 8 3-Methyl-4-nitrobenzoic acid
- 9 5-Methyl-salicylaldehyde
- 10 Hexaphenone

