

MercuryMS - Synergi 2.5µm Max-RP 20 x 2.0mm for Acid, Base, Neutral

Column: Synergi™ 2.5 µm Max-RP 100 Å, LC Column 20 x 2 mm, Mercury, Ea

Dimensions: 20 x 2 mm ID

Order No: 00M-4372-B0-CE

Elution Type: Gradient

Eluent A: 0.1% Formic Acid in Water

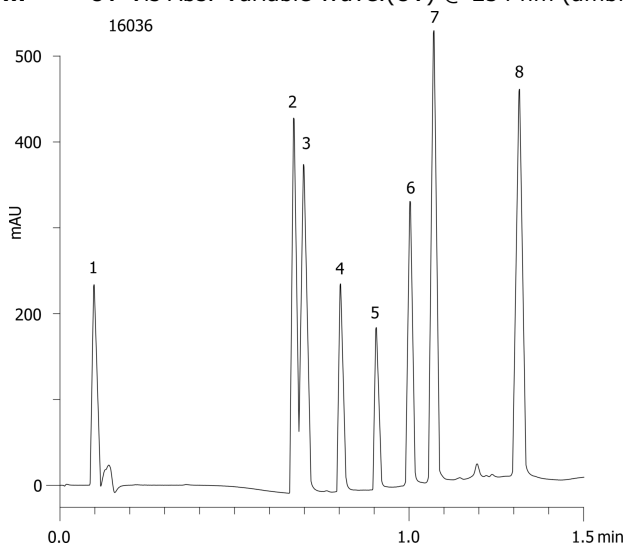
Eluent B: 0.1% Formic Acid in Acetonitrile

Gradient Profile:	Step No.	Time (min)	Pct A	Pct B
	1	0	95	5
	2	1	5	95
	3	1.01	95	5
	4	2	95	5

Flow Rate: 0.6 mL/min

Col. Temp.: ambient

Detection: UV-Vis Abs.-Variable Wave.(UV) @ 254 nm (ambient)



ANALYTES:

- 1** Pyridine
Retention Time: 0.097 min
- 2** Quinidine
Retention Time: 0.609 min
- 3** Sulfathiazole
Retention Time: 0.697 min
- 4** Triprolidine
Retention Time: 0.803 min
- 5** Nortriptyline
Retention Time: 0.905 min
- 6** 3-Methyl-4-nitrobenzoic acid
Retention Time: 1.002 min
- 7** Methyl salicylaldehyde
Retention Time: 1.07 min
- 8** Hexaphenone
Retention Time: 1.315 min

