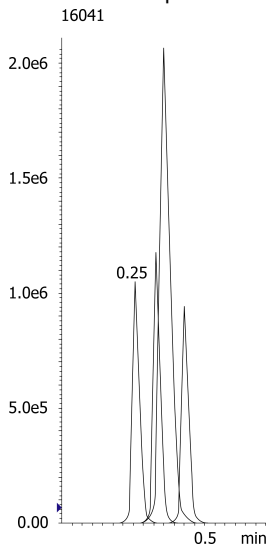


MercuryMS - Synergi 2.5µm Fusion-RP 20 x 2.0mm for Tricyclics in Plasma by LC/MS/MS

Column: N/A
Dimensions: N/A
Order No: N/A
Elution Type: N/A
Eluent A: 0.1% Formic Acid in Water
Eluent B: 0.1% Formic Acid in Acetonitrile
Gradient Profile:

Step No.	Time (min)	Pct A	Pct B
1	0	28	72

Flow Rate: 0.6 mL/min
Col. Temp.: ambient
Detection: Mass Spectrometer (MS) @ amu (ambient)



ANALYTES:

- 1 Doxepin**
Retention Time: 0.42 min
- 2 Desipramine**
Retention Time: 0.56 min
- 3 Imipramine**
Retention Time: 0.63 min
- 4 Nortriptyline**
Retention Time: 0.67 min
- 5 Trimipramine**
Retention Time: 0.85 min
- 6 Amitriptyline**
Retention Time: 0.76 min

